

## Product datasheet for **TA317380**

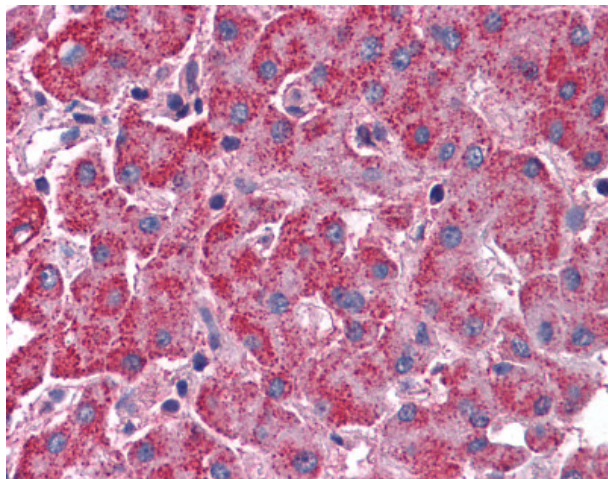
### **SURF4 Rabbit Polyclonal Antibody**

#### **Product data:**

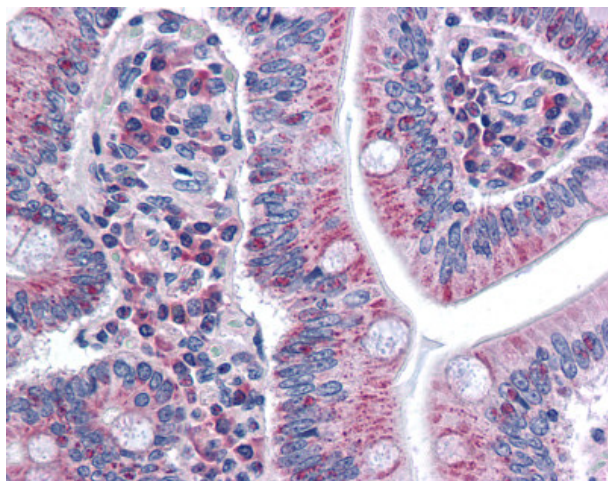
|                              |  |
|------------------------------|--|
| <b>Product Type:</b>         | Primary Antibodies   |
| <b>Applications:</b>         | IHC  |
| <b>Recommended Dilution:</b> | IHC-P (5 µg/ml)  |
| <b>Reactivity:</b>           | Bovine, Gorilla, Human, Monkey, Mouse, Rat, Gibbon, Orang-Utan   |
| <b>Host:</b>                 | Rabbit   |
| <b>Isotype:</b>              | IgG  |
| <b>Clonality:</b>            | Polyclonal   |
| <b>Immunogen:</b>            | SURF4 antibody was raised against synthetic 15 amino acid peptide from N-terminus of human SURF4. Percent identity with other species by BLAST analysis: Human, Gorilla, Orangutan, Gibbon, Monkey, Mouse, Rat, Bovine (100%); Opossum (93%); Turkey, Chicken, Xenopus (87%); Salmon, Stickleback (80%). |
| <b>Formulation:</b>          | PBS, 0.1% sodium azide.  |
| <b>Concentration:</b>        | lot specific   |
| <b>Purification:</b>         | Immunoaffinity Chromatography  |
| <b>Conjugation:</b>          | Unconjugated   |
| <b>Storage:</b>              | Store at -20°C as received.  |
| <b>Stability:</b>            | Stable for 12 months from date of receipt.   |
| <b>Gene Name:</b>            | surfeit 4  |
| <b>Database Link:</b>        | <a href="#">NP_149351</a><br><a href="#">Entrez Gene 20932 Mouse</a> <a href="#">Entrez Gene 619346 Rat</a> <a href="#">Entrez Gene 100429963 Monkey</a> <a href="#">Entrez Gene 6836 Human</a><br><a href="#">O15260</a>  |
| <b>Synonyms:</b>             | ERV29  |
| <b>Note:</b>                 | Specific for Human SURF4. BLAST analysis of the peptide immunogen showed no homology with other human proteins.  |
| <b>Protein Families:</b>     | Transmembrane  |



[View online »](#)

**Product images:**

Anti-SURF4 antibody IHC of human liver. Immunohistochemistry of formalin-fixed, paraffin-embedded tissue after heat-induced antigen retrieval.



Anti-SURF4 antibody IHC of human intestine. Immunohistochemistry of formalin-fixed, paraffin-embedded tissue after heat-induced antigen retrieval.