

Product datasheet for **TA317379**

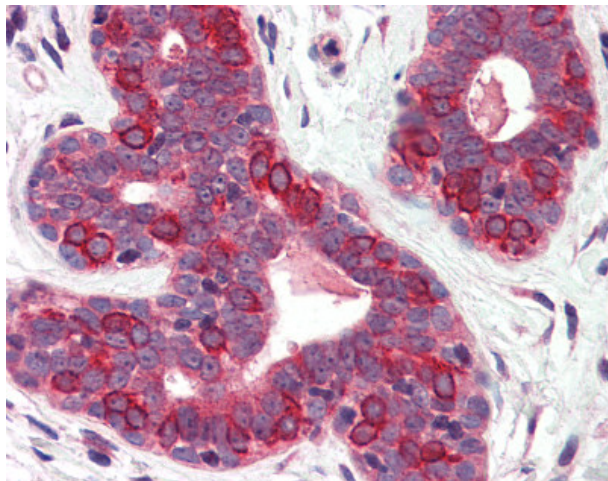
SURF4 Rabbit Polyclonal Antibody

Product data:

Product Type:	Primary Antibodies
Applications:	IHC
Recommended Dilution:	IHC-P (5 µg/ml)
Reactivity:	Bovine, Gorilla, Human, Gibbon, Orang-Utan (Predicted: Monkey, Mouse, Rat, Hamster, Horse, Chicken)
Host:	Rabbit
Isotype:	IgG
Clonality:	Polyclonal
Immunogen:	SURF4 antibody was raised against synthetic 14 amino acid peptide from N-Terminus of human SURF4. Percent identity with other species by BLAST analysis: Human, Gorilla, Orangutan, Gibbon, Marmoset, Bovine (100%); Monkey, Mouse, Rat, Hamster, Elephant, Horse, Opossum, Turkey, Chicken, Platypus (93%); Panda, Dog, Xenopus (86%).
Formulation:	PBS, 0.1% sodium azide.
Concentration:	lot specific
Purification:	Immunoaffinity Chromatography
Conjugation:	Unconjugated
Storage:	Store at -20°C as received.
Stability:	Stable for 12 months from date of receipt.
Gene Name:	surfeit 4
Database Link:	NP_149351 Entrez Gene 20932 MouseEntrez Gene 619346 RatEntrez Gene 100429963 MonkeyEntrez Gene 6836 Human O15260
Synonyms:	ERV29
Note:	Specific for Human SURF4. BLAST analysis of the peptide immunogen showed no homology with other human proteins.
Protein Families:	Transmembrane



[View online »](#)

Product images:

Anti-SURF4 antibody IHC of human breast.
Immunohistochemistry of formalin-fixed,
paraffin-embedded tissue after heat-induced
antigen retrieval.