

Product datasheet for **TA317378**

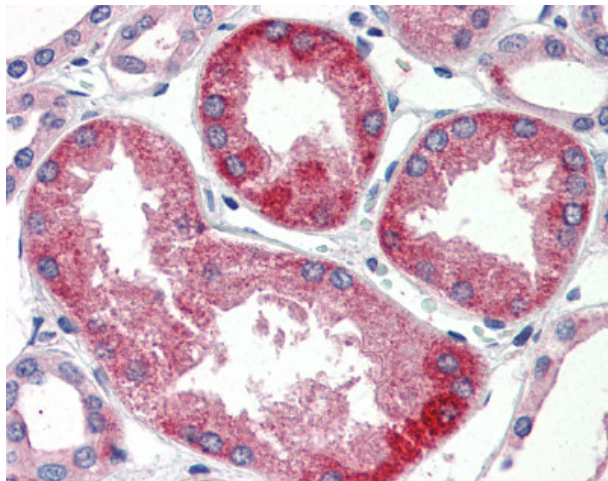
SURF4 Rabbit Polyclonal Antibody

Product data:

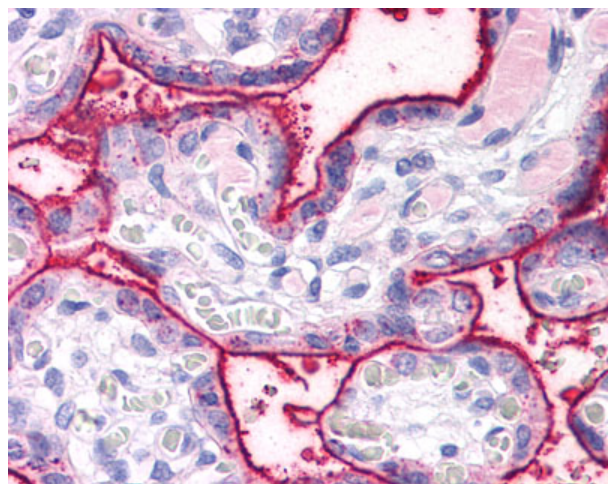
Product Type:	Primary Antibodies
Applications:	IHC
Recommended Dilution:	IHC-P (15 µg/ml)
Reactivity:	Bovine, Chicken, Xenopus, Gorilla, Human, Mouse, Rat, Gibbon, Orang-Utan (Predicted: Monkey, Bat, Dog, Hamster, Zebrafish)
Host:	Rabbit
Isotype:	IgG
Clonality:	Polyclonal
Immunogen:	SURF4 antibody was raised against synthetic 18 amino acid peptide from N-Terminus of human SURF4. Percent identity with other species by BLAST analysis: Human, Gorilla, Orangutan, Gibbon, Monkey, Mouse, Rat, Bovine, Turkey, Chicken, Xenopus, Salmon (100%); Marmoset, Hamster, Elephant, Panda, Dog, Bat, Opossum, Platypus, Pufferfish, Zebrafish (94%); Stickleback (89%).
Formulation:	PBS, 0.1% sodium azide.
Concentration:	lot specific
Purification:	Immunoaffinity Chromatography
Conjugation:	Unconjugated
Storage:	Store at -20°C as received.
Stability:	Stable for 12 months from date of receipt.
Gene Name:	surfeit 4
Database Link:	NP_149351 Entrez Gene 20932 MouseEntrez Gene 619346 RatEntrez Gene 491269 DogEntrez Gene 100429963 MonkeyEntrez Gene 6836 Human O15260
Synonyms:	ERV29
Note:	Specific for Human SURF4. BLAST analysis of the peptide immunogen showed no homology with other human proteins.
Protein Families:	Transmembrane



[View online »](#)

Product images:

Anti-SURF4 antibody IHC of human kidney. Immunohistochemistry of formalin-fixed, paraffin-embedded tissue after heat-induced antigen retrieval.



Anti-SURF4 antibody IHC of human placenta. Immunohistochemistry of formalin-fixed, paraffin-embedded tissue after heat-induced antigen retrieval.