

Product datasheet for **TA317347**

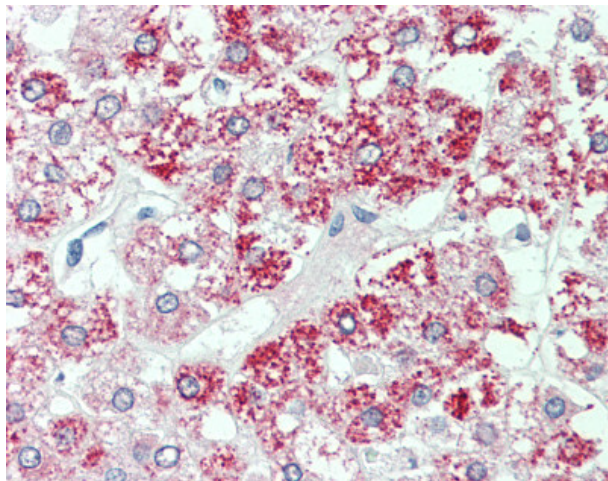
SLC7A2 Rabbit Polyclonal Antibody

Product data:

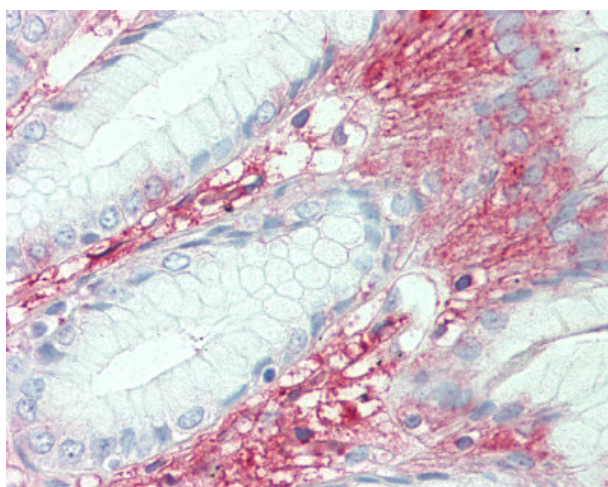
Product Type:	Primary Antibodies
Applications:	IHC
Recommended Dilution:	IHC-P (15 µg/ml)
Reactivity:	Chimpanzee, Gorilla, Human, Mouse, Pig, Rabbit, Rat (Predicted: Monkey, Bat, Bovine, Hamster, Horse)
Host:	Rabbit
Isotype:	IgG
Clonality:	Polyclonal
Immunogen:	SLC7A2 antibody was raised against synthetic 12 amino acid peptide from internal region of human SLC7A2. Percent identity with other species by BLAST analysis: Human, Chimpanzee, Gorilla, Monkey, Mouse, Rat, Rabbit, Pig (100%); Orangutan, Gibbon, Galago, Marmoset, Hamster, Bovine, Bat, Horse (92%); Panda, Dog, Platypus (83%).
Formulation:	PBS, 0.1% sodium azide.
Concentration:	lot specific
Purification:	Immunoaffinity Chromatography
Conjugation:	Unconjugated
Storage:	Store at -20°C as received.
Stability:	Stable for 12 months from date of receipt.
Gene Name:	solute carrier family 7 member 2
Database Link:	NP_003037 Entrez Gene 11988 MouseEntrez Gene 64554 RatEntrez Gene 710629 MonkeyEntrez Gene 6542 Human P52569
Synonyms:	ATRC2; CAT2; HCAT2
Note:	Specific for Human SLC7A2. BLAST analysis of the peptide immunogen showed no homology with other human proteins, except TPR (67%).
Protein Families:	Druggable Genome, Transmembrane



[View online »](#)

Product images:

Anti-SLC7A2 antibody IHC of human adrenal. Immunohistochemistry of formalin-fixed, paraffin-embedded tissue after heat-induced antigen retrieval.



Anti-SLC7A2 antibody IHC of human stomach. Immunohistochemistry of formalin-fixed, paraffin-embedded tissue after heat-induced antigen retrieval.