

## Product datasheet for **TA317343**

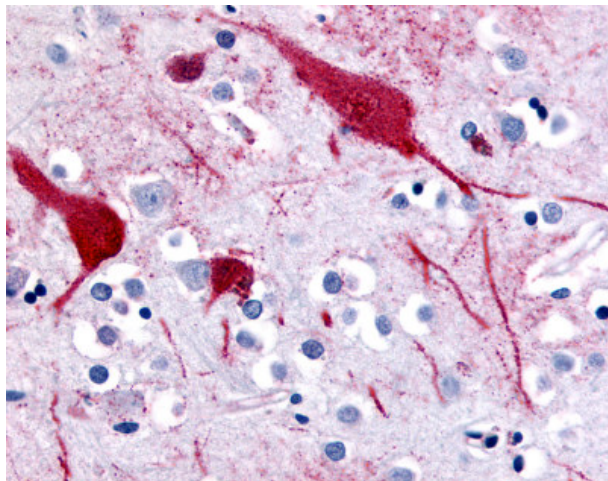
### SLC5A9 Rabbit Polyclonal Antibody

#### Product data:

Product Type:	Primary Antibodies
Applications:	IHC
Recommended Dilution:	IHC-P (10 µg/ml)
Reactivity:	Gorilla, Human, Monkey (Predicted: Mouse, Bat, Bovine, Hamster)
Host:	Rabbit
Isotype:	IgG
Clonality:	Polyclonal
Immunogen:	SLC5A9 / SGLT4 antibody was raised against synthetic 15 amino acid peptide from C-terminus of human SLC5A9. Percent identity with other species by BLAST analysis: Human, Gorilla, Monkey, Marmoset (100%); Gibbon, Mouse, Bat, Bovine, Hamster, Elephant (93%); Turkey, Chicken (80%).
Formulation:	PBS, 0.1% sodium azide.
Concentration:	lot specific
Purification:	Immunoaffinity Chromatography
Conjugation:	Unconjugated
Storage:	Store at -20°C as received.
Stability:	Stable for 12 months from date of receipt.
Gene Name:	solute carrier family 5 member 9
Database Link:	<a href="#">NP_001011547</a> <a href="#">Entrez Gene 230612 Mouse</a> <a href="#">Entrez Gene 713064 Monkey</a> <a href="#">Entrez Gene 200010 Human</a> <a href="#">Q2M3M2</a>
Synonyms:	SGLT4
Note:	Specific for Human SLC5A9. BLAST analysis of the peptide immunogen showed no homology with other human proteins, except AFAP1L2 (60%).
Protein Families:	Transmembrane



[View online »](#)

**Product images:**

Anti-SLC5A9 antibody IHC of human brain, cortex. Immunohistochemistry of formalin-fixed, paraffin-embedded tissue after heat-induced antigen retrieval.