

Product datasheet for **TA317341**

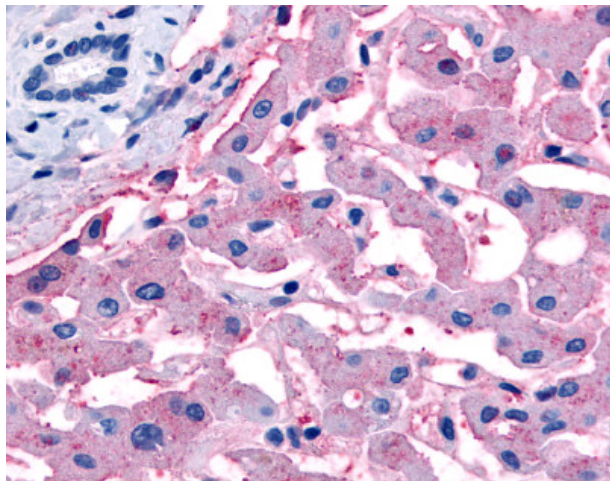
SLC5A4 Rabbit Polyclonal Antibody

Product data:

Product Type:	Primary Antibodies
Applications:	IHC
Recommended Dilution:	IHC-P (20 µg/ml)
Reactivity:	Gorilla, Human (Predicted: Monkey)
Host:	Rabbit
Isotype:	IgG
Clonality:	Polyclonal
Immunogen:	SLC5A4 / SGLT2 antibody was raised against synthetic 16 amino acid peptide from C-terminus of human SLC5A4. Percent identity with other species by BLAST analysis: Human, Gorilla (100%); Gibbon, Baboon, Monkey (94%); Marmoset (81%).
Formulation:	PBS, 0.1% sodium azide.
Concentration:	lot specific
Purification:	Immunoaffinity Chromatography
Conjugation:	Unconjugated
Storage:	Store at -20°C as received.
Stability:	Stable for 12 months from date of receipt.
Gene Name:	solute carrier family 5 member 4
Database Link:	NP_055042 Entrez Gene 717137 Monkey Entrez Gene 6527 Human Q9NY91
Synonyms:	DJ90G24.4; SAAT1; SGLT3
Note:	Specific for Human SLC5A4. BLAST analysis of the peptide immunogen showed no homology with other human proteins.
Protein Families:	Transmembrane



[View online »](#)

Product images:

Anti-SLC5A4 antibody IHC of human liver. Immunohistochemistry of formalin-fixed, paraffin-embedded tissue after heat-induced antigen retrieval.