

## Product datasheet for **TA317338**

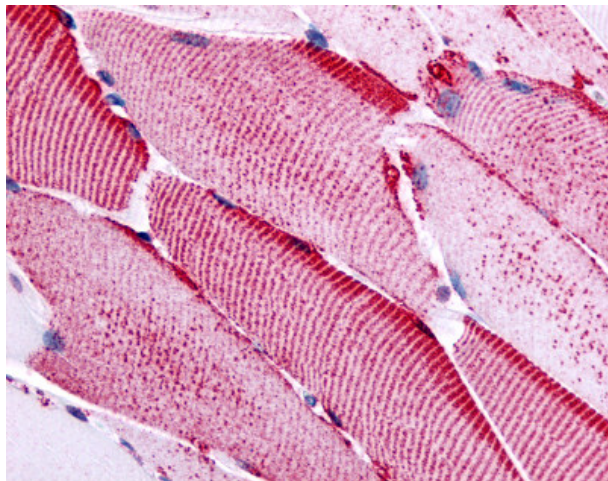
### SLC5A10 Rabbit Polyclonal Antibody

#### Product data:

Product Type:	Primary Antibodies
Applications:	IHC
Recommended Dilution:	IHC-P (20 µg/ml)
Reactivity:	Gorilla, Human, Gibbon (Predicted: Monkey, Rat, Hamster, Pig)
Host:	Rabbit
Isotype:	IgG
Clonality:	Polyclonal
Immunogen:	SLC5A10 / SGLT5 antibody was raised against synthetic 18 amino acid peptide from cytoplasmic domain of human SLC5A10. Percent identity with other species by BLAST analysis: Human, Gorilla, Gibbon, Monkey (100%); Marmoset, Rat, Hamster, Elephant, Pig (94%); Mouse, Dog, Bat, Bovine, Panda, Rabbit, Opossum (89%); Horse (83%).
Formulation:	PBS, 0.1% sodium azide.
Concentration:	lot specific
Purification:	Immunoaffinity Chromatography
Conjugation:	Unconjugated
Storage:	Store at -20°C as received.
Stability:	Stable for 12 months from date of receipt.
Gene Name:	solute carrier family 5 member 10
Database Link:	<a href="#">NP_689564</a> <a href="#">Entrez Gene 303205 Rat</a> <a href="#">Entrez Gene 709069 Monkey</a> <a href="#">Entrez Gene 125206 Human</a> <a href="#">A0PIK1</a>
Synonyms:	SGLT-5; SGLT5
Note:	Specific for Human SLC5A10. BLAST analysis of the peptide immunogen showed no homology with other human proteins, except SLC5A1 (67%).
Protein Families:	Transmembrane



[View online »](#)

**Product images:**

Anti-SLC5A10 antibody IHC of human skeletal muscle. Immunohistochemistry of formalin-fixed, paraffin-embedded tissue after heat-induced antigen retrieval.