

Product datasheet for **TA317337**

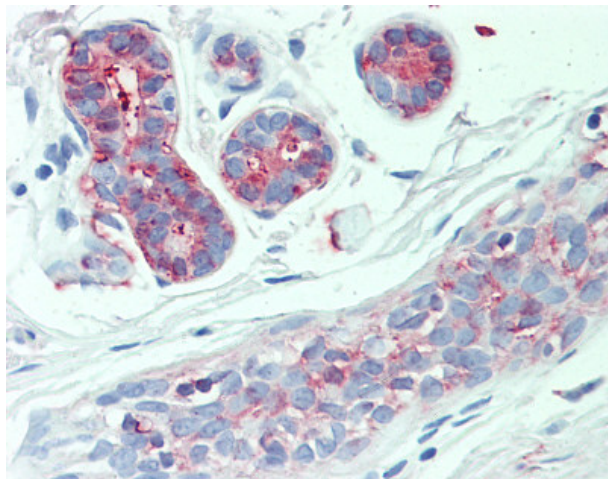
AE2 (SLC4A2) Rabbit Polyclonal Antibody

Product data:

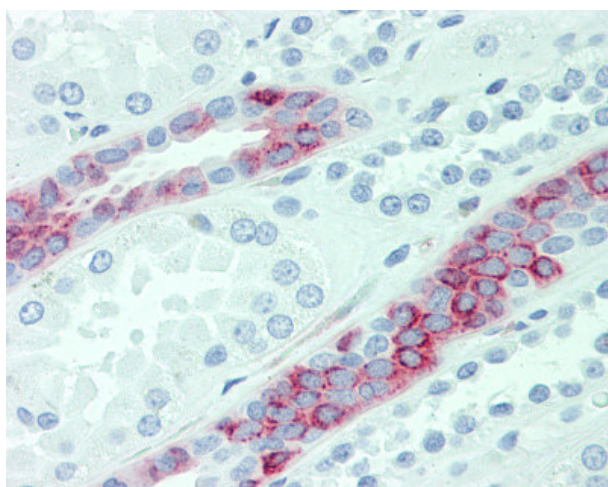
Product Type:	Primary Antibodies
Applications:	IHC
Recommended Dilution:	IHC-P (10 µg/ml)
Reactivity:	Chimpanzee, Gorilla, Human, Monkey, Gibbon, Orang-Utan
Host:	Rabbit
Isotype:	IgG
Clonality:	Polyclonal
Immunogen:	SLC4A2 / AE2 antibody was raised against synthetic 16 amino acid peptide from internal region of human SLC4A2. Percent identity with other species by BLAST analysis: Human, Chimpanzee, Gorilla, Orangutan, Gibbon, Monkey (100%); Marmoset, Elephant, Horse (88%); Panda, Bat (81%).
Formulation:	PBS, 0.1% sodium azide.
Concentration:	lot specific
Purification:	Immunoaffinity Chromatography
Conjugation:	Unconjugated
Storage:	Store at -20°C as received.
Stability:	Stable for 12 months from date of receipt.
Gene Name:	solute carrier family 4 member 2
Database Link:	NP_003031 Entrez Gene 713966 Monkey Entrez Gene 6522 Human P04920
Synonyms:	AE2; BND3L; EPB3L1; HKB3; NBND3
Note:	Specific for Human SLC4A2. BLAST analysis of the peptide immunogen showed no homology with other human proteins.
Protein Families:	Transmembrane



[View online »](#)

Product images:

Anti-SLC4A2 antibody IHC of human breast. Immunohistochemistry of formalin-fixed, paraffin-embedded tissue after heat-induced antigen retrieval.



Anti-SLC4A2 antibody IHC of human kidney. Immunohistochemistry of formalin-fixed, paraffin-embedded tissue after heat-induced antigen retrieval.