

Product datasheet for **TA317336**

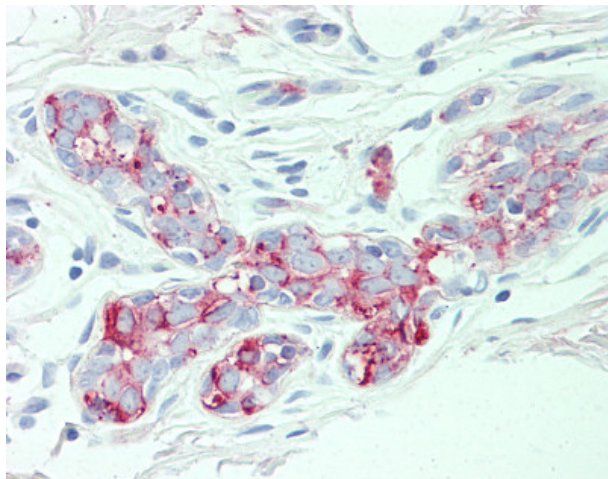
AE2 (SLC4A2) Rabbit Polyclonal Antibody

Product data:

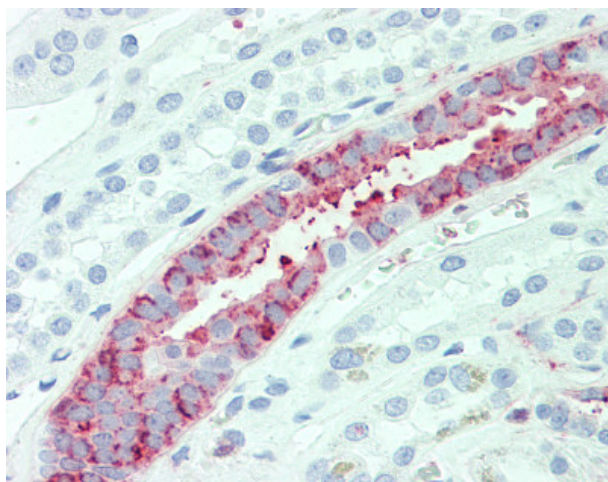
Product Type:	Primary Antibodies
Applications:	IHC
Recommended Dilution:	IHC-P (10 µg/ml)
Reactivity:	Chimpanzee, Dog, Human, Mouse, Pig, Rabbit, Rat, Gibbon, Hamster, Horse, Orang-Utan (Predicted: Monkey, Bovine, Guinea Pig)
Host:	Rabbit
Isotype:	IgG
Clonality:	Polyclonal
Immunogen:	SLC4A2 / AE2 antibody was raised against synthetic 18 amino acid peptide from N-Terminus of human SLC4A2. Percent identity with other species by BLAST analysis: Human, Chimpanzee, Orangutan, Gibbon, Galago, Marmoset, Mouse, Rat, Hamster, Panda, Dog, Horse, Rabbit, Pig (100%); Monkey, Bovine, Guinea pig (94%); Elephant (89%); Bat, Opossum (83%).
Formulation:	PBS, 0.1% sodium azide.
Concentration:	lot specific
Purification:	Immunoaffinity Chromatography
Conjugation:	Unconjugated
Storage:	Store at -20°C as received.
Stability:	Stable for 12 months from date of receipt.
Gene Name:	solute carrier family 4 member 2
Database Link:	NP_003031 Entrez Gene 20535 Mouse Entrez Gene 24780 Rat Entrez Gene 475538 Dog Entrez Gene 713966 Monkey Entrez Gene 6522 Human P04920
Synonyms:	AE2; BND3L; EPB3L1; HKB3; NBND3
Note:	Specific for Human SLC4A2. BLAST analysis of the peptide immunogen showed no homology with other human proteins.
Protein Families:	Transmembrane



[View online »](#)

Product images:

Anti-SLC4A2 antibody IHC of human breast. Immunohistochemistry of formalin-fixed, paraffin-embedded tissue after heat-induced antigen retrieval.



Anti-SLC4A2 antibody IHC of human kidney. Immunohistochemistry of formalin-fixed, paraffin-embedded tissue after heat-induced antigen retrieval.