

## Product datasheet for **TA317334**

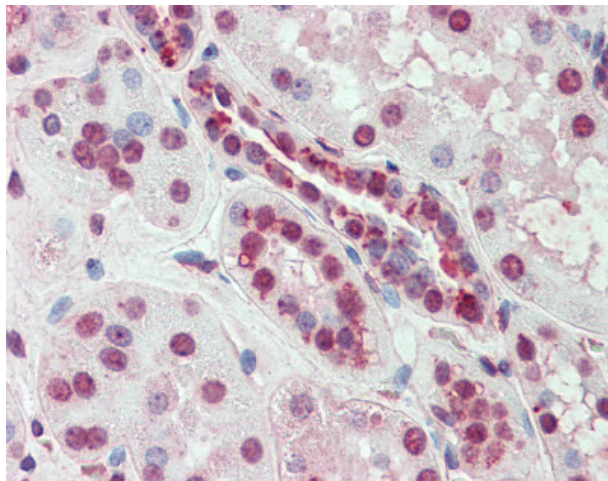
### SLC44A2 Rabbit Polyclonal Antibody

#### Product data:

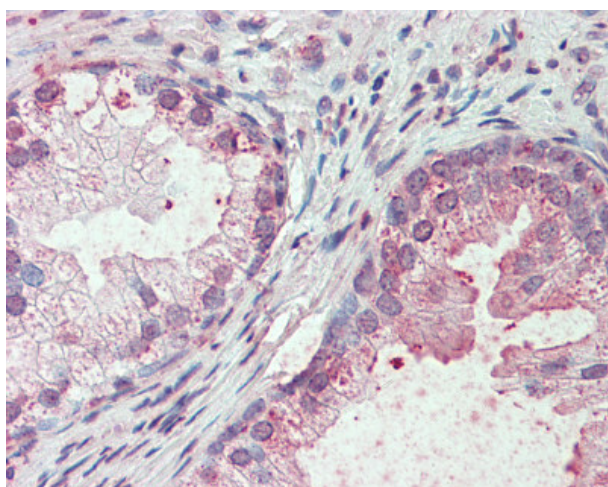
Product Type:	Primary Antibodies
Applications:	IHC
Recommended Dilution:	IHC-P (10 µg/ml)
Reactivity:	Chimpanzee, Gorilla, Human, Monkey, Gibbon, Orang-Utan
Host:	Rabbit
Isotype:	IgG
Clonality:	Polyclonal
Immunogen:	SLC44A2 / CTL2 antibody was raised against synthetic 16 amino acid peptide from internal region of human SLC44A2. Percent identity with other species by BLAST analysis: Human, Chimpanzee, Gorilla, Orangutan, Gibbon, Monkey, Marmoset (100%); Galago (94%); Bat (88%); Rat, Hamster, Elephant, Panda, Dog (81%).
Formulation:	PBS, 0.1% sodium azide.
Concentration:	lot specific
Purification:	Immunoaffinity Chromatography
Conjugation:	Unconjugated
Storage:	Store at -20°C as received.
Stability:	Stable for 12 months from date of receipt.
Gene Name:	solute carrier family 44 member 2
Database Link:	<a href="#">NP_065161</a> <a href="#">Entrez Gene 715866 Monkey</a> <a href="#">Entrez Gene 57153 Human</a> <a href="#">Q8IWA5</a>
Synonyms:	CTL2; PP1292
Note:	Specific for Human SLC44A2. BLAST analysis of the peptide immunogen showed no homology with other human proteins.
Protein Families:	Transmembrane



[View online »](#)

**Product images:**

Anti-SLC44A2 antibody IHC of human kidney. Immunohistochemistry of formalin-fixed, paraffin-embedded tissue after heat-induced antigen retrieval.



Anti-SLC44A2 antibody IHC of human prostate. Immunohistochemistry of formalin-fixed, paraffin-embedded tissue after heat-induced antigen retrieval.