

Product datasheet for **TA317333**

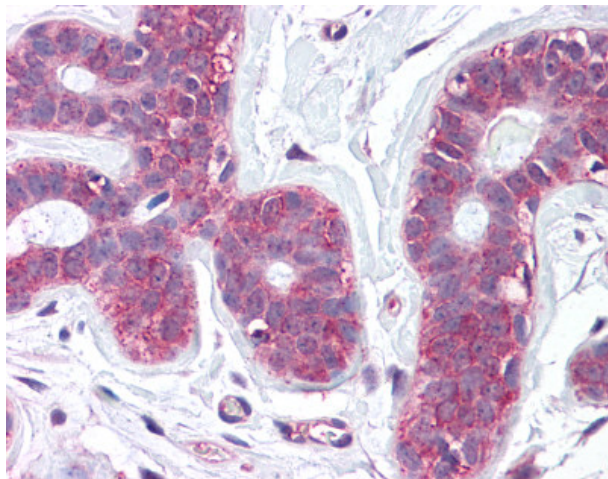
SLC39A6 Rabbit Polyclonal Antibody

Product data:

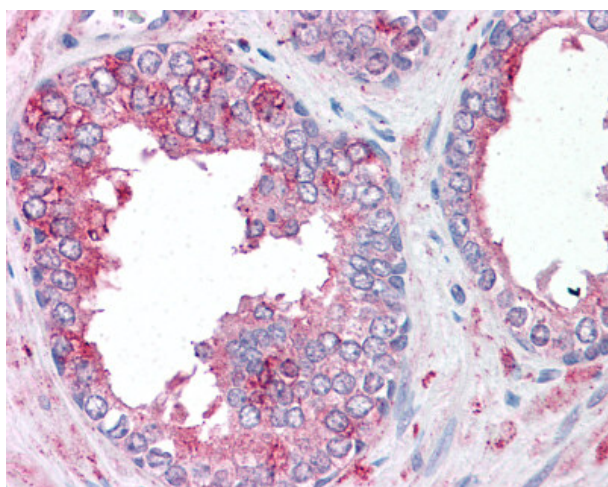
Product Type:	Primary Antibodies
Applications:	IHC
Recommended Dilution:	IHC-P (15 µg/ml)
Reactivity:	Human
Host:	Rabbit
Isotype:	IgG
Clonality:	Polyclonal
Immunogen:	SLC39A6 / LIV-1 antibody was raised against synthetic 20 amino acid peptide from internal region of human SLC39A6. Percent identity with other species by BLAST analysis: Human (100%); Gorilla, Gibbon (95%); Orangutan (90%); Monkey, Marmoset, Panda, Rabbit (85%); Bat, Dog (80%).
Formulation:	PBS, 0.1% sodium azide.
Concentration:	lot specific
Purification:	Immunoaffinity Chromatography
Conjugation:	Unconjugated
Storage:	Store at -20°C as received.
Stability:	Stable for 12 months from date of receipt.
Gene Name:	solute carrier family 39 member 6
Database Link:	NP_036451 Entrez Gene 25800 Human Q13433
Synonyms:	LIV-1; ZIP6
Note:	Specific for Human SLC39A6. BLAST analysis of the peptide immunogen showed no homology with other human proteins.
Protein Families:	Druggable Genome, Transmembrane



[View online »](#)

Product images:

Anti-SLC39A6 antibody IHC of human breast. Immunohistochemistry of formalin-fixed, paraffin-embedded tissue after heat-induced antigen retrieval.



Anti-SLC39A6 antibody IHC of human prostate. Immunohistochemistry of formalin-fixed, paraffin-embedded tissue after heat-induced antigen retrieval.