

Product datasheet for **TA317332**

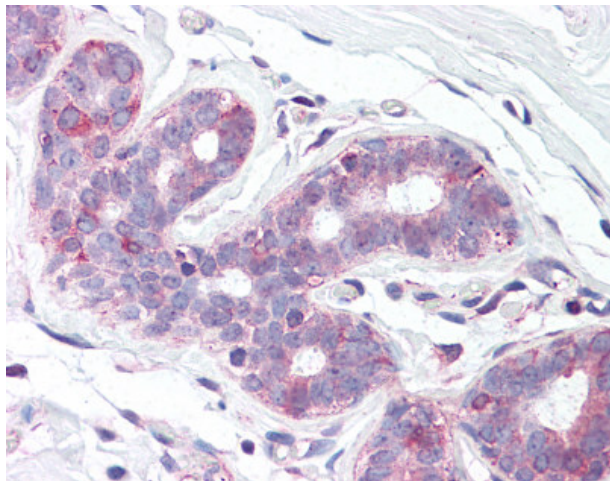
SLC39A6 Rabbit Polyclonal Antibody

Product data:

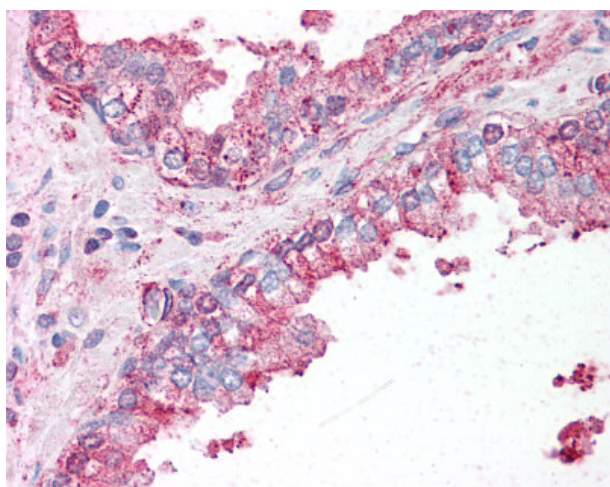
Product Type:	Primary Antibodies
Applications:	IHC
Recommended Dilution:	IHC-P (10 µg/ml)
Reactivity:	Gorilla, Human, Monkey (Predicted: Horse)
Host:	Rabbit
Isotype:	IgG
Clonality:	Polyclonal
Immunogen:	SLC39A6 / LIV-1 antibody was raised against synthetic 18 amino acid peptide from N-terminus of human SLC39A6. Percent identity with other species by BLAST analysis: Human, Gorilla, Monkey (100%); Orangutan, Gibbon, Horse (94%); Marmoset, Dog, Bovine, Panda (89%); Mouse, Rat, Bat, Rabbit (83%).
Formulation:	PBS, 0.1% sodium azide.
Concentration:	lot specific
Purification:	Immunoaffinity Chromatography
Conjugation:	Unconjugated
Storage:	Store at -20°C as received.
Stability:	Stable for 12 months from date of receipt.
Gene Name:	solute carrier family 39 member 6
Database Link:	NP_036451 Entrez Gene 709313 Monkey Entrez Gene 25800 Human Q13433
Synonyms:	LIV-1; ZIP6
Note:	Specific for Human SLC39A6. BLAST analysis of the peptide immunogen showed no homology with other human proteins.
Protein Families:	Druggable Genome, Transmembrane



[View online »](#)

Product images:

Anti-SLC39A6 antibody IHC of human breast. Immunohistochemistry of formalin-fixed, paraffin-embedded tissue after heat-induced antigen retrieval.



Anti-SLC39A6 antibody IHC of human prostate. Immunohistochemistry of formalin-fixed, paraffin-embedded tissue after heat-induced antigen retrieval.