

Product datasheet for **TA317327**

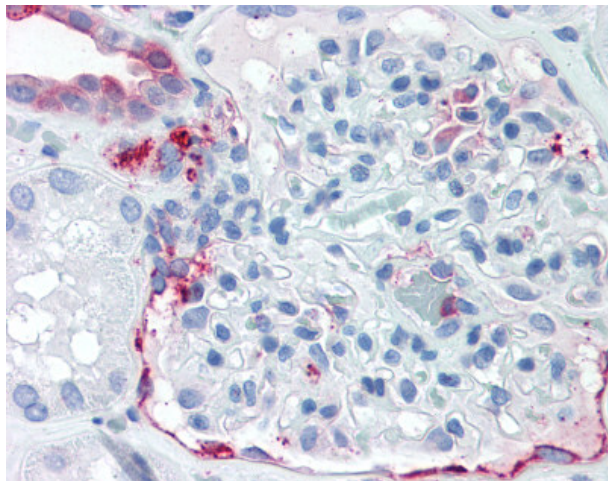
SLC39A14 Rabbit Polyclonal Antibody

Product data:

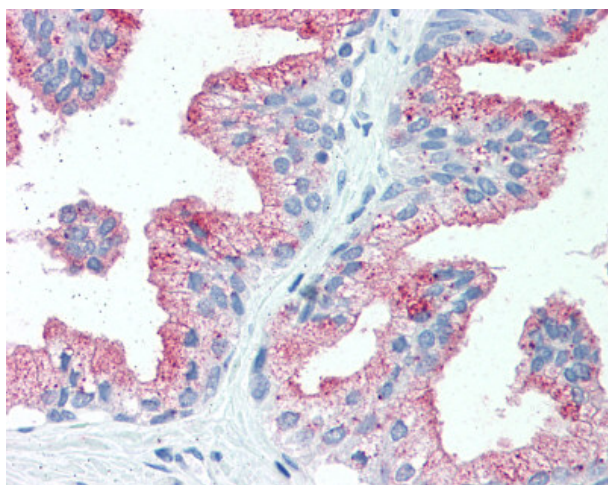
Product Type:	Primary Antibodies
Applications:	IHC
Recommended Dilution:	IHC-P (5 - 7.5 µg/ml)
Reactivity:	Bat, Chimpanzee, Dog, Gorilla, Human, Pig, Horse (Predicted: Monkey, Mouse, Bovine, Hamster)
Host:	Rabbit
Isotype:	IgG
Clonality:	Polyclonal
Immunogen:	SLC39A14 / ZIP14 antibody was raised against synthetic 15 amino acid peptide from internal region of human SLC39A14. Percent identity with other species by BLAST analysis: Human, Chimpanzee, Gorilla, Panda, Dog, Bat, Horse, Pig (100%); Orangutan, Gibbon, Monkey, Galago, Marmoset, Mouse, Hamster, Bovine (93%); Elephant (87%); Rat, Rabbit, Guinea pig (80%).
Formulation:	PBS, 0.1% sodium azide.
Purification:	Immunoaffinity Chromatography
Conjugation:	Unconjugated
Storage:	Store at -20°C as received.
Stability:	Stable for 12 months from date of receipt.
Gene Name:	solute carrier family 39 member 14
Database Link:	NP_056174 Entrez Gene 213053 Mouse Entrez Gene 486124 Dog Entrez Gene 716112 Monkey Entrez Gene 23516 Human Q15043
Synonyms:	cig19; HMNDYT2; LZT-Hs4; NET34; ZIP14
Note:	Specific for Human SLC39A14. BLAST analysis of the peptide immunogen showed no homology with other human proteins.
Protein Families:	Transmembrane



[View online »](#)

Product images:

Anti-SLC39A14 antibody IHC of human kidney. Immunohistochemistry of formalin-fixed, paraffin-embedded tissue after heat-induced antigen retrieval.



Anti-SLC39A14 antibody IHC of human prostate. Immunohistochemistry of formalin-fixed, paraffin-embedded tissue after heat-induced antigen retrieval.