

## Product datasheet for **TA317322**

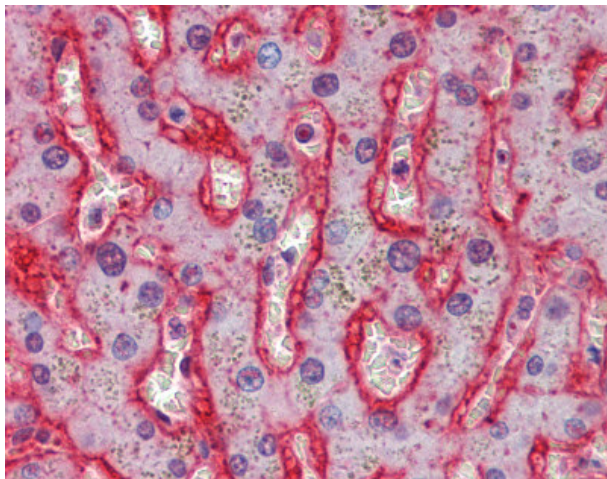
### SLC2A2 Goat Polyclonal Antibody

#### Product data:

Product Type:	Primary Antibodies
Applications:	IHC
Recommended Dilution:	IHC-P (2.5 µg/ml)
Reactivity:	Gorilla, Human, Gibbon (Predicted: Monkey, Bat, Horse, Pig, Rabbit)
Host:	Goat
Clonality:	Polyclonal
Immunogen:	SLC2A2 / GLUT2 antibody was raised against synthetic peptide C-RKEREEASSEQKVS from an internal region of human SLC2A2 / GLUT2 (NP_000331.1). Percent identity by BLAST analysis: Human, Gorilla, Gibbon (100%); Monkey, Marmoset, Panda, Bat, Rabbit, Horse, Pig (93%); Rat, Sheep, Elephant, Dog, Bovine (86%).
Formulation:	Tris-buffered saline, pH 7.3, 0.5% BSA, 0.02% sodium azide
Purification:	Immunoaffinity Chromatography
Conjugation:	Unconjugated
Storage:	Store at -20°C as received.
Stability:	Stable for 12 months from date of receipt.
Gene Name:	solute carrier family 2 member 2
Database Link:	<a href="#">NP_000331</a> <a href="#">Entrez Gene 695538 Monkey</a> <a href="#">Entrez Gene 6514 Human</a> <a href="#">P11168</a>
Synonyms:	GLUT2
Note:	Specific for Human SLC2A2 / GLUT2.
Protein Families:	Druggable Genome, ES Cell Differentiation/IPS, Transmembrane
Protein Pathways:	Maturity onset diabetes of the young, Type II diabetes mellitus



[View online »](#)

**Product images:**

Anti-GLUT2 antibody IHC of human liver. Immunohistochemistry of formalin-fixed, paraffin-embedded tissue after heat-induced antigen retrieval. Antibody concentration 2.5 ug/ml.