

## Product datasheet for **TA317318**

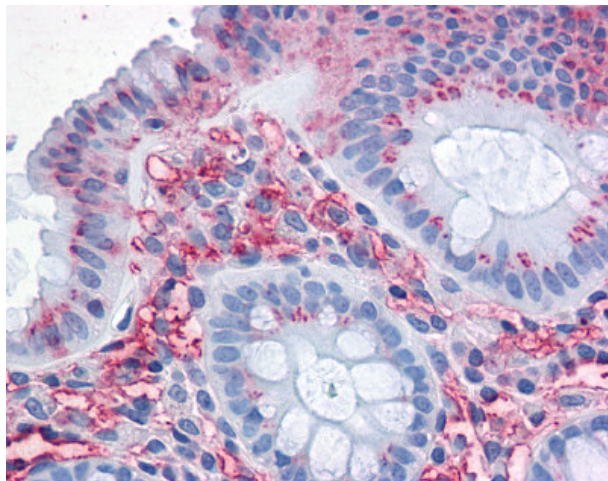
### SLC1A5 Rabbit Polyclonal Antibody

#### Product data:

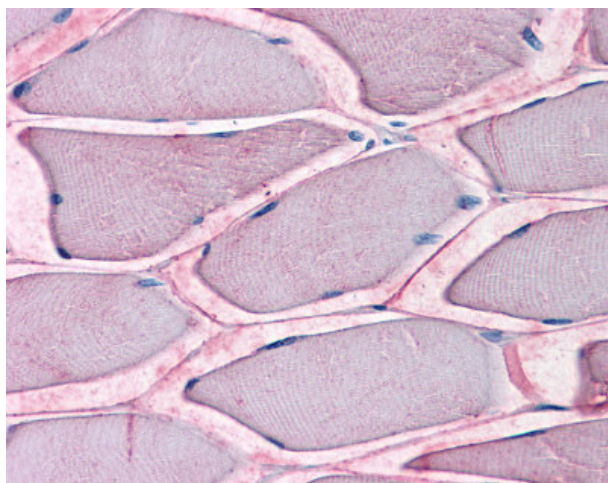
Product Type:	Primary Antibodies
Applications:	IHC
Recommended Dilution:	IHC-P (15 - 20 µg/ml)
Reactivity:	Gorilla, Human, Monkey
Host:	Rabbit
Isotype:	IgG
Clonality:	Polyclonal
Immunogen:	SLC1A5 / ASCT2 antibody was raised against synthetic 17 amino acid peptide from internal region of human SLC1A5. Percent identity with other species by BLAST analysis: Human, Gorilla, Monkey (100%); Gibbon (94%).
Formulation:	PBS, 0.1% sodium azide.
Concentration:	lot specific
Purification:	Immunoaffinity Chromatography
Conjugation:	Unconjugated
Storage:	Store at -20°C as received.
Stability:	Stable for 12 months from date of receipt.
Gene Name:	solute carrier family 1 member 5
Database Link:	<a href="#">NP_005619</a> <a href="#">Entrez Gene 716843 Monkey</a> <a href="#">Entrez Gene 6510 Human</a> <a href="#">Q15758</a>
Synonyms:	AAAT; ASCT2; ATBO; M7V1; M7VS1; R16; RDRC
Note:	Specific for Human SLC1A5. BLAST analysis of the peptide immunogen showed no homology with other human proteins.
Protein Families:	Druggable Genome, Transmembrane



[View online »](#)

**Product images:**

Anti-SLC1A5 antibody IHC of human colon. Immunohistochemistry of formalin-fixed, paraffin-embedded tissue after heat-induced antigen retrieval.



Anti-SLC1A5 antibody IHC of human skeletal muscle. Immunohistochemistry of formalin-fixed, paraffin-embedded tissue after heat-induced antigen retrieval.