

Product datasheet for **TA317315**

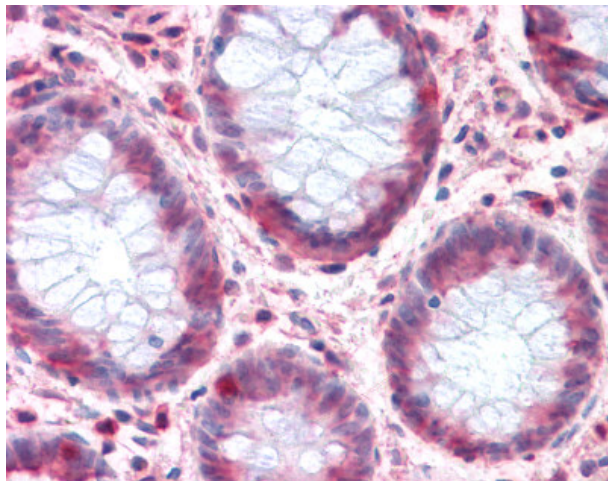
SLC1A4 Rabbit Polyclonal Antibody

Product data:

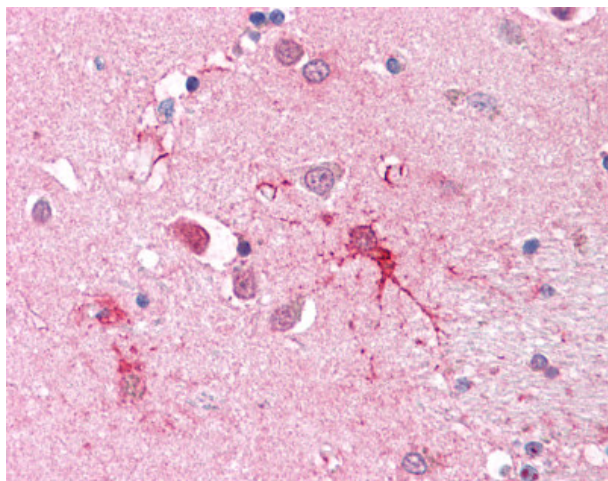
Product Type:	Primary Antibodies
Applications:	IHC
Recommended Dilution:	IHC-P (10 - 12.5 µg/ml)
Reactivity:	Dog, Gorilla, Human, Gibbon (Predicted: Monkey, Mouse, Hamster, Horse, Rabbit)
Host:	Rabbit
Isotype:	IgG
Clonality:	Polyclonal
Immunogen:	SLC1A4 / ASCT1 antibody was raised against synthetic 17 amino acid peptide from C-terminus of human SLC1A4. Percent identity with other species by BLAST analysis: Human, Gorilla, Gibbon, Monkey, Dog, Panda, Opossum (100%); Marmoset, Mouse, Hamster, Rabbit, Horse, Platypus (94%); Rat, Elephant (88%); Bovine (82%).
Formulation:	PBS, 0.1% sodium azide.
Concentration:	lot specific
Purification:	Immunoaffinity Chromatography
Conjugation:	Unconjugated
Storage:	Store at -20°C as received.
Stability:	Stable for 12 months from date of receipt.
Gene Name:	solute carrier family 1 member 4
Database Link:	NP_003029 Entrez Gene 55963 Mouse Entrez Gene 481391 Dog Entrez Gene 699288 Monkey Entrez Gene 6509 Human P43007
Synonyms:	ASCT1; SATT; SPATCCM
Note:	Specific for Human SLC1A4. BLAST analysis of the peptide immunogen showed no homology with other human proteins.
Protein Families:	Druggable Genome, Transmembrane



[View online »](#)

Product images:

Anti-SLC1A4 antibody IHC of human colon. Immunohistochemistry of formalin-fixed, paraffin-embedded tissue after heat-induced antigen retrieval.



Anti-SLC1A4 antibody IHC of human brain-cortex. Immunohistochemistry of formalin-fixed, paraffin-embedded tissue after heat-induced antigen retrieval.