

Product datasheet for **TA317313**

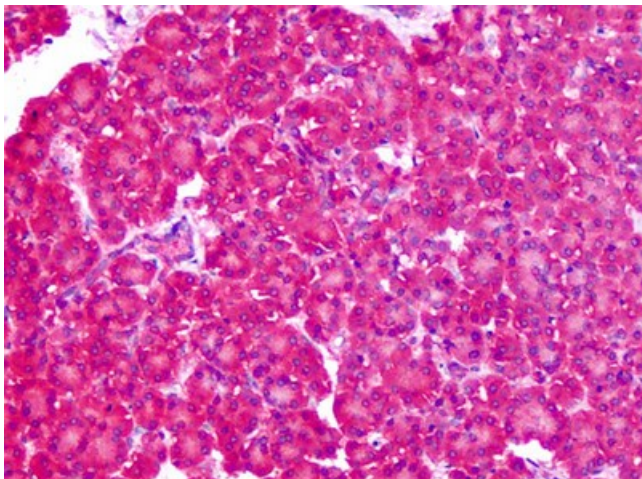
SLC1A4 Rabbit Polyclonal Antibody

Product data:

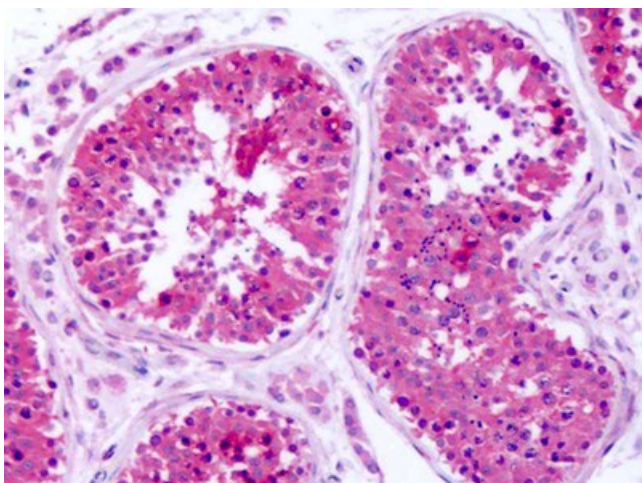
Product Type:	Primary Antibodies
Applications:	IHC
Recommended Dilution:	IHC-P (2.5 µg/ml)
Reactivity:	Gorilla, Human, Monkey, Gibbon
Host:	Rabbit
Isotype:	IgG
Clonality:	Polyclonal
Immunogen:	SLC1A4 / ASCT1 antibody was raised against synthetic 17 amino acid peptide from N-Terminus of human SLC1A4. Percent identity with other species by BLAST analysis: Human, Gorilla, Gibbon, Marmoset (100%); Bovine (88%).
Formulation:	PBS, 0.1% sodium azide.
Concentration:	lot specific
Purification:	Immunoaffinity Chromatography
Conjugation:	Unconjugated
Storage:	Store at -20°C as received.
Stability:	Stable for 12 months from date of receipt.
Gene Name:	solute carrier family 1 member 4
Database Link:	NP_003029 Entrez Gene 699288 Monkey Entrez Gene 6509 Human P43007
Synonyms:	ASCT1; SATT; SPATCCM
Note:	Specific for Human SLC1A4. BLAST analysis of the peptide immunogen showed no homology with other human proteins.
Protein Families:	Druggable Genome, Transmembrane



[View online »](#)

Product images:

Anti-ASCT1 / SLC1A4 antibody IHC of human pancreas. Immunohistochemistry of formalin-fixed, paraffin-embedded tissue after heat-induced antigen retrieval. Antibody dilution 2.5 ug/ml.



Anti-ASCT1 / SLC1A4 antibody IHC of human testis. Immunohistochemistry of formalin-fixed, paraffin-embedded tissue after heat-induced antigen retrieval. Antibody dilution 2.5 ug/ml.