

Product datasheet for **TA317310**

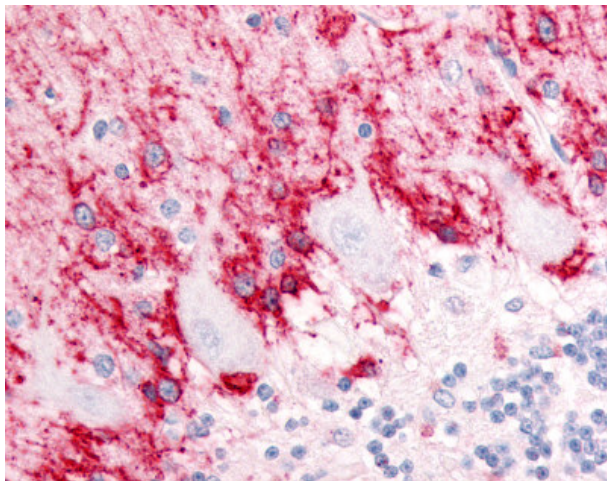
EAAT1 (SLC1A3) Rabbit Polyclonal Antibody

Product data:

Product Type:	Primary Antibodies
Applications:	IHC
Recommended Dilution:	IHC-P (5 µg/ml)
Reactivity:	Bovine, Gorilla, Human, Monkey, Mouse, Pig, Rabbit, Rat, Gibbon, Hamster, Horse (Predicted: Dog, Chicken, Guinea Pig)
Host:	Rabbit
Isotype:	IgG
Clonality:	Polyclonal
Immunogen:	SLC1A3 / GluT-1 / GLAST antibody was raised against synthetic 19 amino acid peptide from cytoplasmic domain of human SLC1A3 / GLAST. Percent identity with other species by BLAST analysis: Human, Gorilla, Gibbon, Monkey, Marmoset, Mouse, Rat, Hamster, Elephant, Bovine, Horse, Rabbit, Pig (100%); Panda, Dog, Opossum, Guinea pig, Turkey, Chicken (95%); Xenopus (84%).
Formulation:	PBS, 0.1% sodium azide.
Concentration:	lot specific
Purification:	Immunoaffinity Chromatography
Conjugation:	Unconjugated
Storage:	Store at -20°C as received.
Stability:	Stable for 12 months from date of receipt.
Gene Name:	solute carrier family 1 member 3
Database Link:	NP_004163 Entrez Gene 20512 Mouse Entrez Gene 29483 Rat Entrez Gene 403748 Dog Entrez Gene 701109 Monkey Entrez Gene 6507 Human P43003
Synonyms:	EA6; EAAT1; GLAST; GLAST1
Note:	Specific for Human SLC1A3 / GLAST. BLAST analysis of the peptide immunogen showed no homology with other human proteins.
Protein Families:	Transmembrane



[View online »](#)

Product images:

Anti-SLC1A3 / GLAST antibody IHC of human brain, cerebellum, molecular layer and Purkinje layer. Immunohistochemistry of formalin-fixed, paraffin-embedded tissue after heat-induced antigen retrieval.