

Product datasheet for **TA317307**

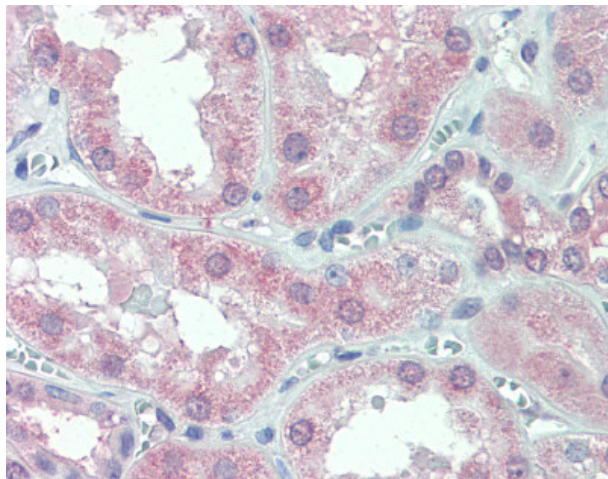
DMT1 (SLC11A2) Rabbit Polyclonal Antibody

Product data:

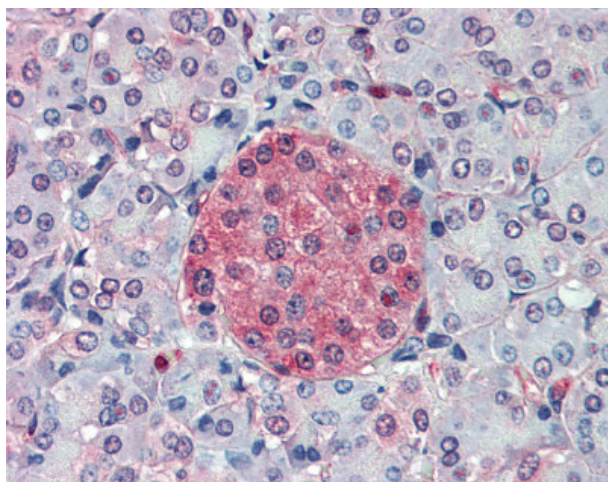
Product Type:	Primary Antibodies
Applications:	IHC
Recommended Dilution:	IHC-P (15 µg/ml)
Reactivity:	Human, Gibbon (Predicted: Monkey, Bovine, Pig)
Host:	Rabbit
Isotype:	IgG
Clonality:	Polyclonal
Immunogen:	SLC11A2 / DMT1 antibody was raised against synthetic 15 amino acid peptide from C-terminus of human SLC11A2. Percent identity with other species by BLAST analysis: Human, Gibbon (100%); Gorilla, Monkey, Bovine, Elephant, Pig (93%); Dog, Rabbit (87%); Marmoset, Panda (80%).
Formulation:	PBS, 0.1% sodium azide.
Concentration:	lot specific
Purification:	Immunoaffinity Chromatography
Conjugation:	Unconjugated
Storage:	Store at -20°C as received.
Stability:	Stable for 12 months from date of receipt.
Gene Name:	solute carrier family 11 member 2
Database Link:	NP_000608 Entrez Gene 693986 Monkey Entrez Gene 4891 Human P49281
Synonyms:	DCT1; DMT1; NRAMP2
Note:	Specific for Human SLC11A2. BLAST analysis of the peptide immunogen showed no homology with other human proteins.
Protein Families:	Transmembrane
Protein Pathways:	Lysosome



[View online »](#)

Product images:

Anti-SLC11A2 antibody IHC of human kidney. Immunohistochemistry of formalin-fixed, paraffin-embedded tissue after heat-induced antigen retrieval.



Anti-SLC11A2 antibody IHC of human pancreas. Immunohistochemistry of formalin-fixed, paraffin-embedded tissue after heat-induced antigen retrieval.