

## Product datasheet for **TA317306**

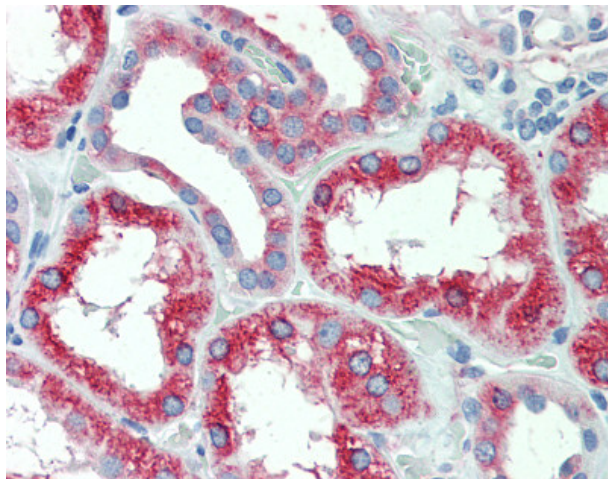
### DMT1 (SLC11A2) Rabbit Polyclonal Antibody

#### Product data:

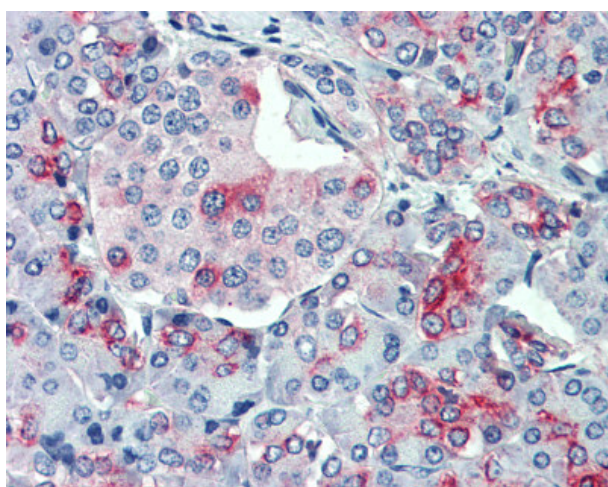
Product Type:	Primary Antibodies
Applications:	IHC
Recommended Dilution:	IHC-P (15 - 20 µg/ml)
Reactivity:	Chimpanzee, Gorilla, Human, Monkey, Gibbon, Orang-Utan (Predicted: Rat, Bovine, Hamster, Horse)
Host:	Rabbit
Isotype:	IgG
Clonality:	Polyclonal
Immunogen:	SLC11A2 / DMT1 antibody was raised against synthetic 16 amino acid peptide from internal region of human SLC11A2. Percent identity with other species by BLAST analysis: Human, Chimpanzee, Gorilla, Orangutan, Gibbon, Monkey, Marmoset (100%); Galago, Rat, Hamster, Bovine, Horse (94%); Mouse, Elephant (88%); Dog, Bat, Rabbit, Pig, Guinea pig (81%).
Formulation:	PBS, 0.1% sodium azide.
Concentration:	lot specific
Purification:	Immunoaffinity Chromatography
Conjugation:	Unconjugated
Storage:	Store at -20°C as received.
Stability:	Stable for 12 months from date of receipt.
Gene Name:	solute carrier family 11 member 2
Database Link:	<a href="#">NP_000608</a> <a href="#">Entrez Gene 25715 Rat</a> <a href="#">Entrez Gene 693986 Monkey</a> <a href="#">Entrez Gene 4891 Human</a> <a href="#">P49281</a>
Synonyms:	DCT1; DMT1; NRAMP2
Note:	Specific for Human SLC11A2. BLAST analysis of the peptide immunogen showed no homology with other human proteins.
Protein Families:	Transmembrane
Protein Pathways:	Lysosome



[View online »](#)

**Product images:**

Anti-SLC11A2 antibody IHC of human, kidney. Immunohistochemistry of formalin-fixed, paraffin-embedded tissue after heat-induced antigen retrieval.



Anti-SLC11A2 antibody IHC of human, pancreas. Immunohistochemistry of formalin-fixed, paraffin-embedded tissue after heat-induced antigen retrieval.