

Product datasheet for **TA317304**

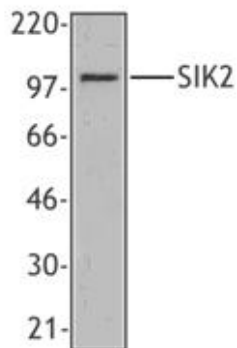
Snf1lk2 (SIK2) Mouse Monoclonal Antibody [Clone ID: S15G10]

Product data:

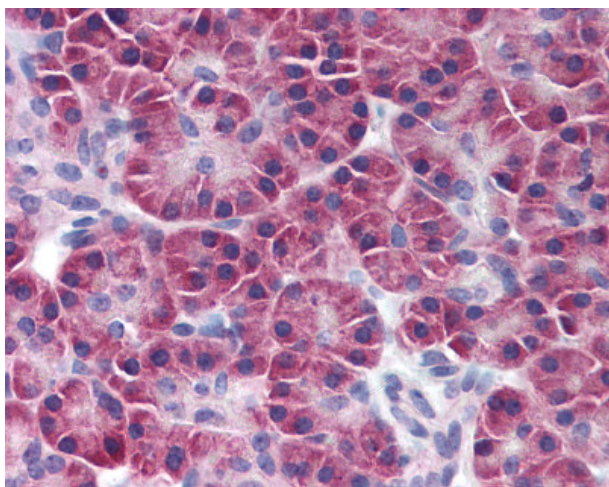
Product Type:	Primary Antibodies
Clone Name:	S15G10
Applications:	IF, IHC, IP, WB
Recommended Dilution:	IHC-Paraffin (10 µg/ml) with heat induced antigen retrieval in pH 6.0 citrate buffer Immunofluorescence (1:100 - 1:400) Western Blot (1:250) Immunoprecipitation
Reactivity:	Human
Host:	Mouse
Isotype:	IgG1
Clonality:	Monoclonal
Immunogen:	SIK2 / SNF1LK2 antibody was raised against recombinant human SIK2 / SNF1LK2.
Formulation:	Phosphate-buffered solution, pH 7.2, 0.09% sodium azide. Sourced in TCS.
Concentration:	lot specific
Purification:	Affinity Chromatography
Conjugation:	Unconjugated
Storage:	Store at -20°C as received.
Stability:	Stable for 12 months from date of receipt.
Gene Name:	salt inducible kinase 2
Database Link:	NP_056006 Entrez Gene 23235 Human Q9H0K1
Synonyms:	LOH11CR11; QIK; SIK-2; SNF1LK2
Note:	Specific for Recombinant human SIK2
Protein Families:	Druggable Genome, Protein Kinase



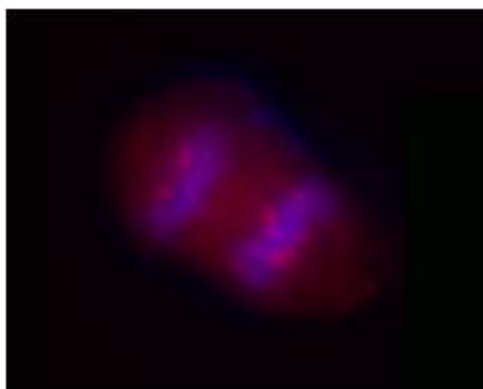
[View online »](#)

Product images:

Western blot analysis of extracts from HeLa cells, using anti-SIK2, clone S15G10.



Anti-SIK2 / SNF1LK2 antibody IHC of human pancreas. Immunohistochemistry of formalin-fixed, paraffin-embedded tissue after heat-induced antigen retrieval. Antibody concentration 10 ug/ml.



Overnight nocodazole treated HeLa cells stained with purified mouse monoclonal antibody against SIK2 (clone S15G10), followed by Cy3 conjugated Goat anti-mouse IgG and DAPI.