

Product datasheet for **TA317293**

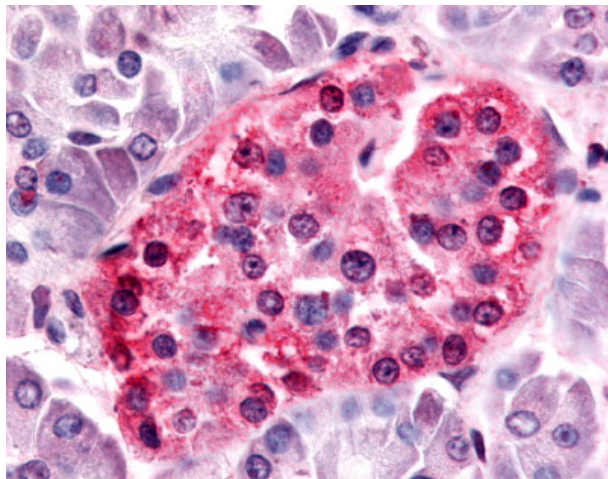
SGK3 Rabbit Polyclonal Antibody

Product data:

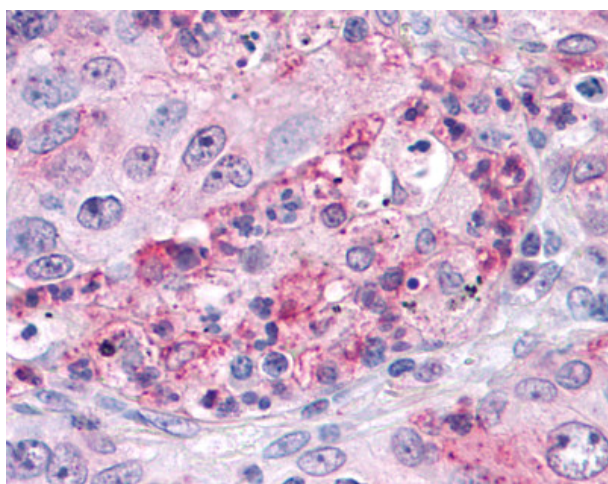
Product Type:	Primary Antibodies
Applications:	IHC
Recommended Dilution:	IHC-P (1 - 36 µg/ml)
Reactivity:	Bat, Dog, Gorilla, Human, Mouse, Rat, Gibbon, Hamster, Orang-Utan (Predicted: Monkey, Bovine, Horse, Rabbit, Chicken)
Host:	Rabbit
Isotype:	IgG
Clonality:	Polyclonal
Immunogen:	SGK3 antibody was raised against synthetic 20 amino acid peptide from internal region of human SGK3. Percent identity with other species by BLAST analysis: Human, Gorilla, Orangutan, Gibbon, Mouse, Rat, Hamster, Panda, Dog, Bat (100%); Monkey, Marmoset, Elephant, Bovine, Horse, Rabbit (95%); Turkey, Chicken, Platypus (90%); Opossum, Lizard (85%).
Formulation:	PBS, 0.1% sodium azide.
Concentration:	lot specific
Purification:	Immunoaffinity Chromatography
Conjugation:	Unconjugated
Storage:	Store at -20°C as received.
Stability:	Stable for 12 months from date of receipt.
Gene Name:	serum/glucocorticoid regulated kinase family member 3
Database Link:	NP_733827 Entrez Gene 170755 MouseEntrez Gene 171498 RatEntrez Gene 486981 DogEntrez Gene 703700 MonkeyEntrez Gene 23678 Human Q96BR1
Synonyms:	CISK; SGK2; SGKL
Note:	Specific for Human SGK3. BLAST analysis of the peptide immunogen showed no homology with other human proteins.
Protein Families:	Druggable Genome, Protein Kinase



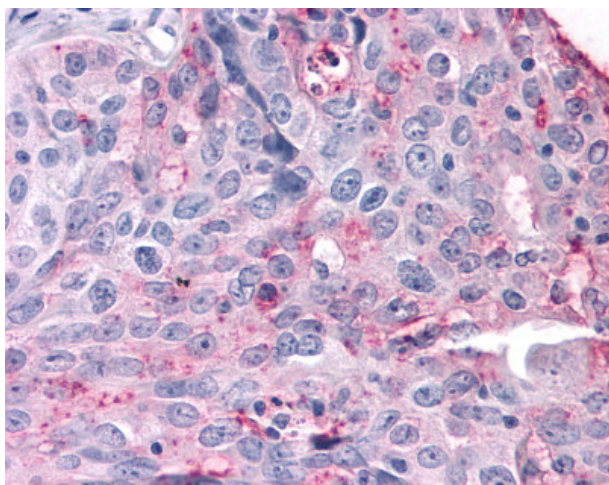
[View online »](#)

Product images:

Anti-SGK3 antibody IHC of human islet of Langerhans. Immunohistochemistry of formalin-fixed, paraffin-embedded tissue after heat-induced antigen retrieval.



Anti-SGK3 antibody IHC of human Lung, Non-Small Cell Carcinoma. Immunohistochemistry of formalin-fixed, paraffin-embedded tissue after heat-induced antigen retrieval.



Anti-SGK3 antibody IHC of human Ovary, Carcinoma. Immunohistochemistry of formalin-fixed, paraffin-embedded tissue after heat-induced antigen retrieval.