

Product datasheet for **TA317289**

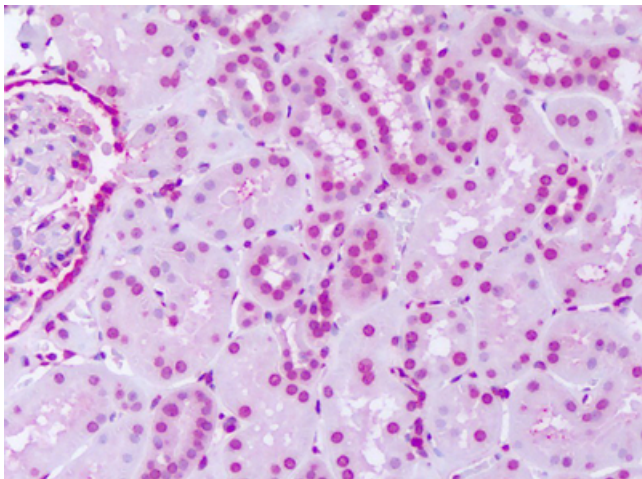
SGK2 Rabbit Polyclonal Antibody

Product data:

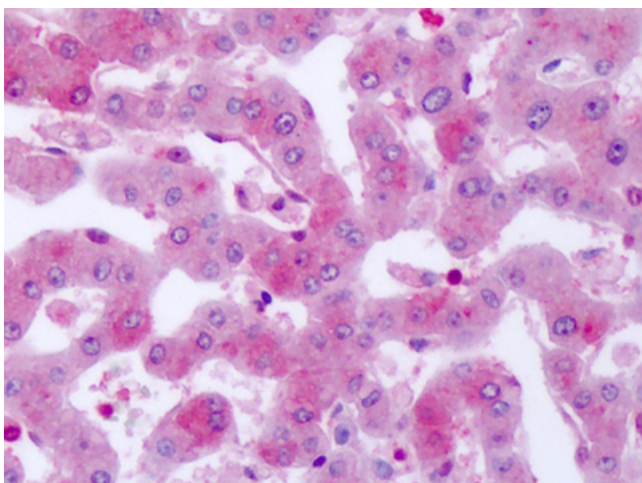
Product Type:	Primary Antibodies
Applications:	IHC
Recommended Dilution:	IHC-P (1 µg/ml)
Reactivity:	Gorilla, Human, Gibbon
Host:	Rabbit
Isotype:	IgG
Clonality:	Polyclonal
Immunogen:	SGK2 antibody was raised against synthetic 18 amino acid peptide from near N-terminus of human SGK2. Percent identity with other species by BLAST analysis: Human, Gorilla, Gibbon (100%); Monkey (89%); Marmoset (83%).
Formulation:	PBS, 0.1% sodium azide.
Concentration:	lot specific
Purification:	Immunoaffinity Chromatography
Conjugation:	Unconjugated
Storage:	Store at -20°C as received.
Stability:	Stable for 12 months from date of receipt.
Gene Name:	SGK2, serine/threonine kinase 2
Database Link:	NP_733794 Entrez Gene 10110 Human Q9HBY8
Synonyms:	dj138B7.2; H-SGK2
Note:	Specific for Human SGK2. BLAST analysis of the peptide immunogen showed no homology with other human proteins.
Protein Families:	Druggable Genome, Protein Kinase



[View online »](#)

Product images:

Anti-SGK2 antibody IHC of human kidney. Immunohistochemistry of formalin-fixed, paraffin-embedded tissue after heat-induced antigen retrieval. Antibody dilution 1 ug/ml.



Anti-SGK2 antibody IHC of human liver. Immunohistochemistry of formalin-fixed, paraffin-embedded tissue after heat-induced antigen retrieval. Antibody dilution 1 ug/ml.