

## Product datasheet for **TA317280**

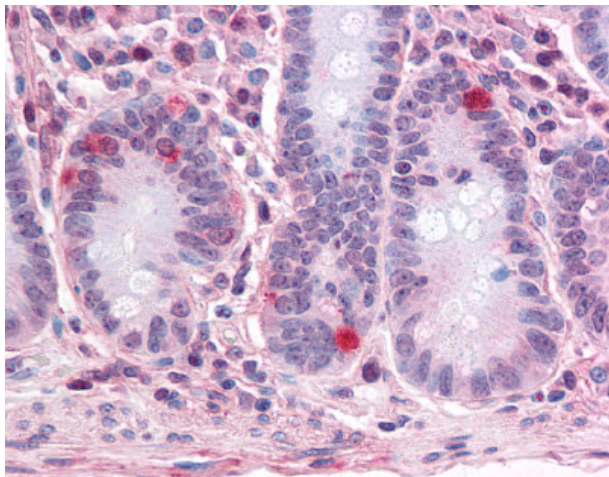
### SEMA4B Rabbit Polyclonal Antibody

#### Product data:

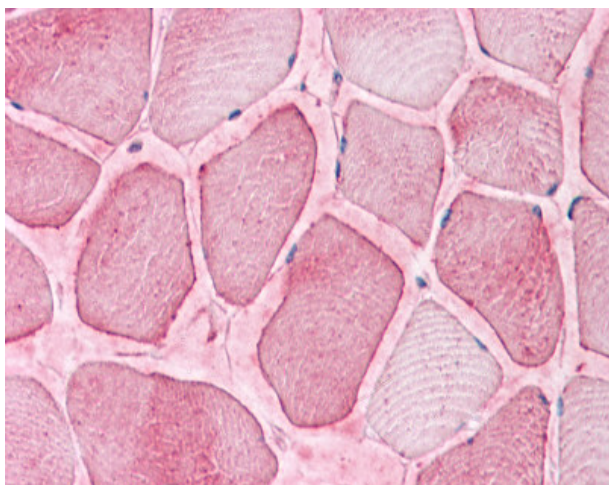
Product Type:	Primary Antibodies
Applications:	IHC
Recommended Dilution:	IHC-P (15 - 20 µg/ml)
Reactivity:	Human (Predicted: Monkey)
Host:	Rabbit
Isotype:	IgG
Clonality:	Polyclonal
Immunogen:	SEMA4B antibody was raised against synthetic 17 amino acid peptide from internal region of human SEMA4B. Percent identity with other species by BLAST analysis: Human (100%); Gorilla, Gibbon, Monkey (94%); Marmoset, Hamster (88%); Elephant, Rabbit (82%).
Formulation:	PBS, 0.1% sodium azide.
Concentration:	lot specific
Purification:	Immunoaffinity Chromatography
Conjugation:	Unconjugated
Storage:	Store at -20°C as received.
Stability:	Stable for 12 months from date of receipt.
Gene Name:	semaphorin 4B
Database Link:	<a href="#">NP_064595</a> <a href="#">Entrez Gene 708168 Monkey</a> <a href="#">Entrez Gene 10509 Human</a> <a href="#">Q9NPR2</a>
Synonyms:	SEMAC; SemC
Note:	Specific for Human SEMA4B. BLAST analysis of the peptide immunogen showed no homology with other human proteins, except JAKMIP2 (47%).
Protein Families:	Transmembrane
Protein Pathways:	Axon guidance



[View online »](#)

**Product images:**

Anti-SEMA4B antibody IHC of human small intestine. Immunohistochemistry of formalin-fixed, paraffin-embedded tissue after heat-induced antigen retrieval.



Anti-SEMA4B antibody IHC of human skeletal muscle. Immunohistochemistry of formalin-fixed, paraffin-embedded tissue after heat-induced antigen retrieval.