

## Product datasheet for **TA317268**

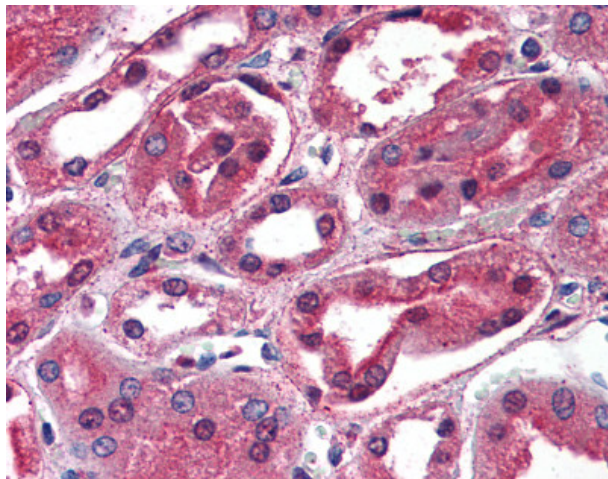
### epithelial Sodium Channel gamma (SCNN1G) Rabbit Polyclonal Antibody

#### Product data:

Product Type:	Primary Antibodies
Applications:	IHC
Recommended Dilution:	IHC-P (5 µg/ml), WB (1 µg/ml)
Reactivity:	Human
Host:	Rabbit
Isotype:	IgG
Clonality:	Polyclonal
Immunogen:	SCNN1G / ENaC Gamma antibody was raised against synthetic peptide from human SCNN1G.
Formulation:	PBS, 0.01% sodium azide, 50% glycerol.
Concentration:	lot specific
Purification:	Immunoaffinity Chromatography
Conjugation:	Unconjugated
Storage:	Store at -20°C as received.
Stability:	Stable for 12 months from date of receipt.
Gene Name:	sodium channel epithelial 1 gamma subunit
Database Link:	<a href="#">NP_001030</a> <a href="#">Entrez Gene 6340 Human P51170</a>
Synonyms:	BESC3; ENaCg; ENaCgamma; PHA1; SCNEG
Note:	Specific for synthetic peptide corresponding to C-terminal residues of human SCNN1G(Amiloride-sensitive sodium channel gamma-subunit)
Protein Families:	Druggable Genome, Ion Channels: Other, Transmembrane
Protein Pathways:	Taste transduction



[View online »](#)

**Product images:**

Anti-SCNN1G antibody IHC of human kidney. Immunohistochemistry of formalin-fixed, paraffin-embedded tissue after heat-induced antigen retrieval. Antibody concentration 5 ug/ml.