

## Product datasheet for **TA317267**

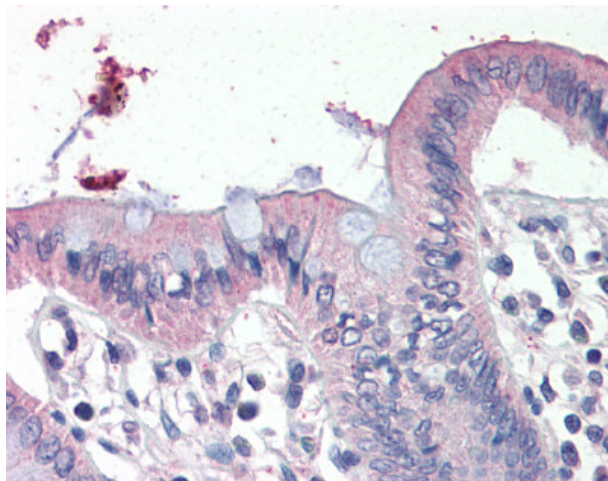
### epithelial Sodium Channel gamma (SCNN1G) Goat Polyclonal Antibody

#### Product data:

Product Type:	Primary Antibodies
Applications:	IHC
Recommended Dilution:	ELISA (1:16000), IHC-P (4 µg/ml)
Reactivity:	Gorilla, Human (Predicted: Monkey)
Host:	Goat
Clonality:	Polyclonal
Immunogen:	SCNN1G / ENaC Gamma antibody was raised against synthetic peptide C-SNQLTDTQMLDE from the C-terminus of human SCNN1G (NP_001030.2). Percent identity by BLAST analysis: Human, Gorilla, Marmoset (100%); Monkey (92%); Elephant (83%).
Formulation:	Tris-buffered saline, pH 7.3, 0.5% BSA, 0.02% sodium azide
Concentration:	lot specific
Purification:	Immunoaffinity Chromatography
Conjugation:	Unconjugated
Storage:	Store at -20°C as received.
Stability:	Stable for 12 months from date of receipt.
Gene Name:	sodium channel epithelial 1 gamma subunit
Database Link:	<a href="#">NP_001030</a> <a href="#">Entrez Gene 699971 Monkey</a> <a href="#">Entrez Gene 6340 Human</a> <a href="#">P51170</a>
Synonyms:	BESC3; ENaCg; ENaCgamma; PHA1; SCNEG
Note:	Specific for Human SCNN1G.
Protein Families:	Druggable Genome, Ion Channels: Other, Transmembrane
Protein Pathways:	Taste transduction



[View online »](#)

**Product images:**

Anti-SCNN1G antibody IHC of human colon. Immunohistochemistry of formalin-fixed, paraffin-embedded tissue after heat-induced antigen retrieval. Antibody concentration 4 ug/ml.