

Product datasheet for **TA317265**

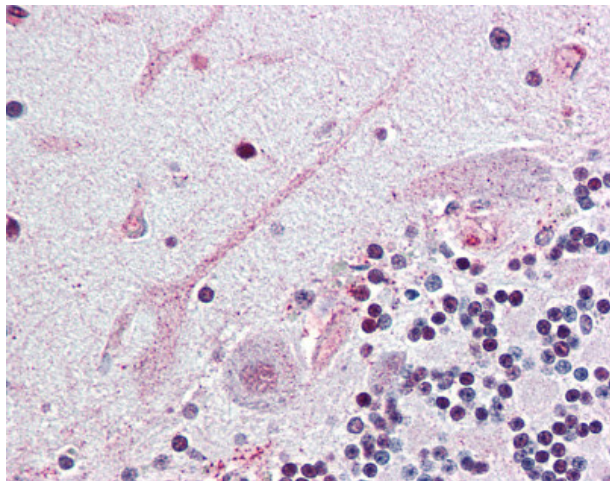
SCN3A Rabbit Polyclonal Antibody

Product data:

Product Type:	Primary Antibodies
Applications:	IHC
Recommended Dilution:	IHC-P (15 - 20 µg/ml)
Reactivity:	Chimpanzee, Human (Predicted: Monkey)
Host:	Rabbit
Isotype:	IgG
Clonality:	Polyclonal
Immunogen:	SCN3A / Nav1.3 antibody was raised against synthetic 18 amino acid peptide from internal region of human SCN3A / Nav1.3. Percent identity with other species by BLAST analysis: Human, Chimpanzee (100%); Monkey, Galago (94%); Orangutan, Gibbon, Marmoset, Mouse, Bovine, Guinea pig (89%); Rat, Hamster, Panda, Dog (83%).
Formulation:	PBS, 0.1% sodium azide.
Concentration:	lot specific
Purification:	Immunoaffinity Chromatography
Conjugation:	Unconjugated
Storage:	Store at -20°C as received.
Stability:	Stable for 12 months from date of receipt.
Gene Name:	sodium voltage-gated channel alpha subunit 3
Database Link:	NP_008853 Entrez Gene 703178 Monkey Entrez Gene 6328 Human Q9NY46
Synonyms:	NAC3; Nav1.3
Note:	Specific for Human SCN3A / Nav1.3. BLAST analysis of the peptide immunogen showed no homology with other human proteins.
Protein Families:	Druggable Genome, Ion Channels: Sodium, Transmembrane



[View online »](#)

Product images:

Anti-SCN3A / Nav1.3 antibody IHC of human brain, cerebellum. Immunohistochemistry of formalin-fixed, paraffin-embedded tissue after heat-induced antigen retrieval.