

## Product datasheet for **TA317262**

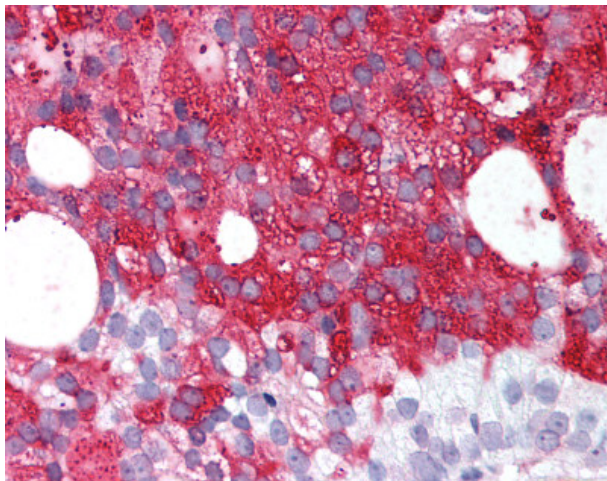
### LGR7 (RXFP1) Rabbit Polyclonal Antibody

#### Product data:

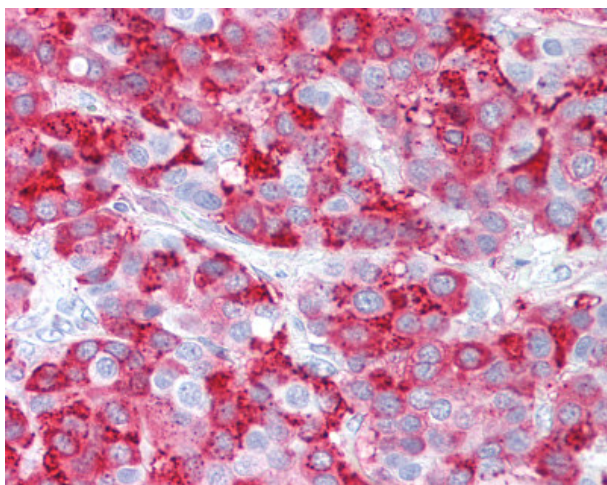
Product Type:	Primary Antibodies
Applications:	IHC
Recommended Dilution:	IHC-P (12 µg/ml)
Reactivity:	Gorilla, Human, Orang-Utan (Predicted: Monkey)
Host:	Rabbit
Isotype:	IgG
Clonality:	Polyclonal
Immunogen:	RXFP1/ LGR7 antibody was raised against synthetic 19 amino acid peptide from C-terminus of human RXFP1. Percent identity with other species by BLAST analysis: Human, Gorilla, Orangutan (100%); Gibbon, Monkey (95%); Marmoset (84%).
Formulation:	PBS, 0.1% sodium azide.
Concentration:	lot specific
Purification:	Immunoaffinity Chromatography
Conjugation:	Unconjugated
Storage:	Store at -20°C as received.
Stability:	Stable for 12 months from date of receipt.
Gene Name:	relaxin/insulin like family peptide receptor 1
Database Link:	<a href="#">NP_067647</a> <a href="#">Entrez Gene 701107 Monkey</a> <a href="#">Entrez Gene 59350 Human</a> <a href="#">Q9HBX9</a>
Synonyms:	LGR7; RXFP1
Note:	Specific for Human RXFP1. BLAST analysis of the peptide immunogen showed no homology with other human proteins, except ANGPT2 (47%).
Protein Families:	Druggable Genome, GPCR, Transmembrane
Protein Pathways:	Neuroactive ligand-receptor interaction



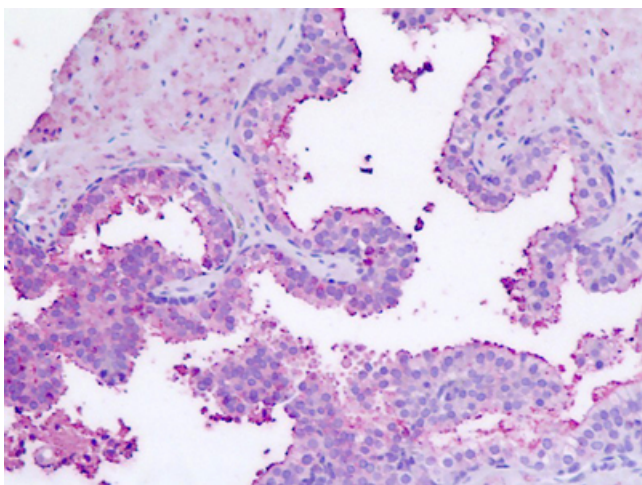
[View online »](#)

**Product images:**

Anti-RXFP1/ LGR7 antibody IHC of human Prostate, Carcinoma. Immunohistochemistry of formalin-fixed, paraffin-embedded tissue after heat-induced antigen retrieval.



Anti-RXFP1/ LGR7 antibody IHC of human Breast, Carcinoma. Immunohistochemistry of formalin-fixed, paraffin-embedded tissue after heat-induced antigen retrieval.



Human Prostate: Formalin-Fixed, Paraffin-Embedded (FFPE)