

Product datasheet for **TA317258**

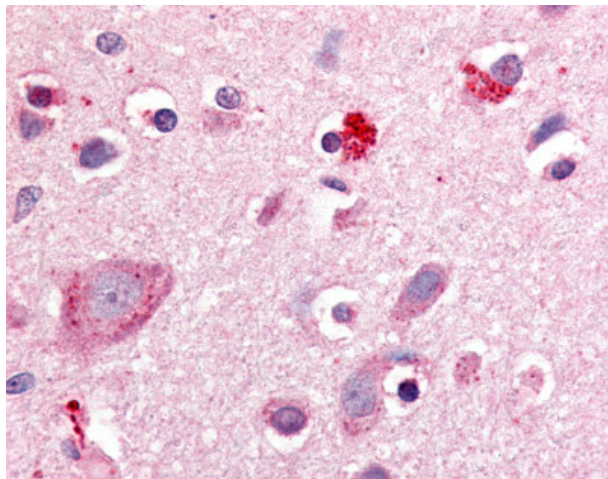
ROR beta (RORB) Rabbit Polyclonal Antibody

Product data:

Product Type:	Primary Antibodies
Applications:	IHC
Recommended Dilution:	IHC-P (20 µg/ml)
Reactivity:	Bat, Bovine, Chicken, Dog, Gorilla, Human, Monkey, Mouse, Rabbit, Rat, Sheep, Gibbon, Hamster, Horse (Predicted: Xenopus)
Host:	Rabbit
Isotype:	IgG
Clonality:	Polyclonal
Immunogen:	RORB / ROR Beta antibody was raised against synthetic 18 amino acid peptide from hinge domain of human ROR Beta. Percent identity with other species by BLAST analysis: Human, Gorilla, Gibbon, Monkey, Marmoset, Mouse, Rat, Sheep, Hamster, Panda, Bovine, Dog, Bat, Horse, Rabbit, Opossum, Chicken, Platypus, Lizard (100%); Elephant, Xenopus (94%); Zebrafish (83%).
Formulation:	PBS, 0.1% sodium azide.
Concentration:	lot specific
Purification:	Immunoaffinity Chromatography
Conjugation:	Unconjugated
Storage:	Store at -20°C as received.
Stability:	Stable for 12 months from date of receipt.
Gene Name:	RAR related orphan receptor B
Database Link:	NP_008845 Entrez Gene 225998 MouseEntrez Gene 309288 RatEntrez Gene 484164 DogEntrez Gene 703310 MonkeyEntrez Gene 6096 Human Q92753
Synonyms:	bA133M9.1; NR1F2; ROR-BETA; RZR-BETA; RZRB
Note:	Specific for Human ROR Beta. BLAST analysis of the peptide immunogen showed no homology with other human proteins.
Protein Families:	Druggable Genome, Nuclear Hormone Receptor, Transcription Factors



[View online »](#)

Product images:

Anti-ROR Beta antibody IHC of human brain, cortex. Immunohistochemistry of formalin-fixed, paraffin-embedded tissue after heat-induced antigen retrieval.