

## Product datasheet for **TA317242**

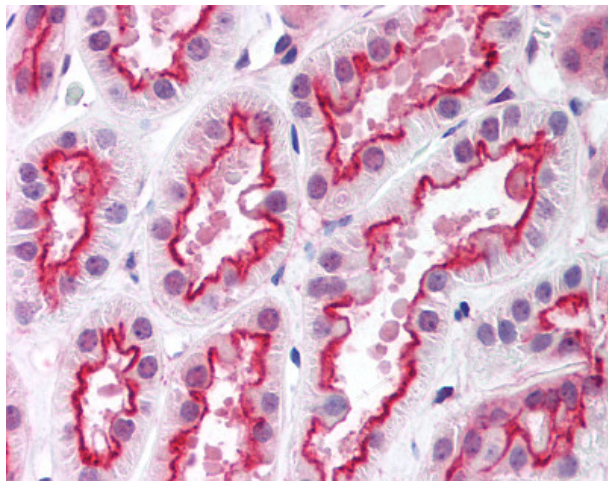
### RAI2 Rabbit Polyclonal Antibody

#### Product data:

Product Type:	Primary Antibodies
Applications:	IHC
Recommended Dilution:	ELISA (1:000 - 1:1000), IHC-P (10 µg/ml)
Reactivity:	Human
Host:	Rabbit
Isotype:	IgG
Clonality:	Polyclonal
Immunogen:	RAI2 antibody was raised against synthetic peptide from human RAI2.
Formulation:	PBS, 0.1% sodium azide.
Concentration:	lot specific
Purification:	Protein G Column
Conjugation:	Unconjugated
Storage:	Store at -20°C as received.
Stability:	Stable for 12 months from date of receipt.
Gene Name:	retinoic acid induced 2
Database Link:	<a href="#">NP_068557</a> <a href="#">Entrez Gene 10742 Human</a> <a href="#">Q9Y5P3</a>
Synonyms:	OTTHUMP00000022997; OTTHUMP00000022998; retinoic acid induced 2
Note:	Specific for Amino acids 516 to 530 of human RAI2



[View online »](#)

**Product images:**

Anti-RAI2 antibody IHC of human kidney. Immunohistochemistry of formalin-fixed, paraffin-embedded tissue after heat-induced antigen retrieval. Antibody concentration 10 ug/ml.