

Product datasheet for **TA317240**

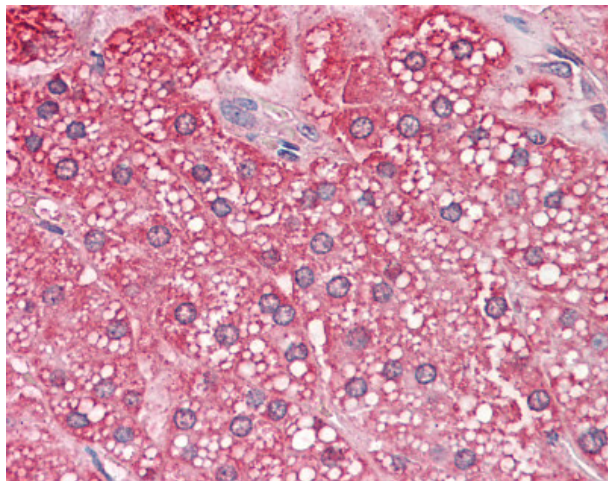
QSOX2 Rabbit Polyclonal Antibody

Product data:

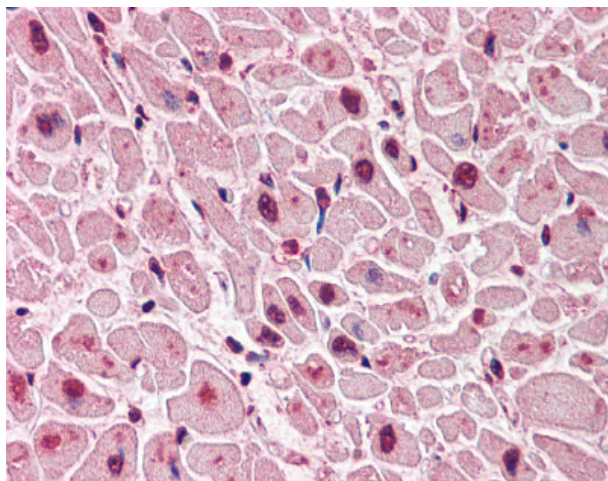
Product Type:	Primary Antibodies
Applications:	IHC
Recommended Dilution:	IHC-P (20 µg/ml)
Reactivity:	Bat, Gorilla, Human, Monkey, Mouse, Gibbon, Horse (Predicted: Rat, Bovine, Dog, Hamster)
Host:	Rabbit
Isotype:	IgG
Clonality:	Polyclonal
Immunogen:	QSOX2 antibody was raised against synthetic 20 amino acid peptide from internal region of human QSOX2. Percent identity with other species by BLAST analysis: Human, Gorilla, Gibbon, Monkey, Mouse, Bat, Horse (100%); Rat, Bovine (95%); Dog, Hamster (90%); Panda, Opossum (85%); Turkey, Chicken (80%).
Formulation:	PBS, 0.1% sodium azide.
Concentration:	lot specific
Purification:	Immunoaffinity Chromatography
Conjugation:	Unconjugated
Storage:	Store at -20°C as received.
Stability:	Stable for 12 months from date of receipt.
Gene Name:	quiescin sulfhydryl oxidase 2
Database Link:	NP_859052 Entrez Gene 227638 MouseEntrez Gene 681023 RatEntrez Gene 607571 DogEntrez Gene 721768 MonkeyEntrez Gene 169714 Human Q6ZRP7
Synonyms:	QSCN6L1; SOXN
Note:	Specific for Human QSOX2. BLAST analysis of the peptide immunogen showed no homology with other human proteins.
Protein Families:	Transmembrane



[View online »](#)

Product images:

Anti-QSOX2 antibody IHC of human adrenal. Immunohistochemistry of formalin-fixed, paraffin-embedded tissue after heat-induced antigen retrieval.



Anti-QSOX2 antibody IHC of human heart. Immunohistochemistry of formalin-fixed, paraffin-embedded tissue after heat-induced antigen retrieval.