

Product datasheet for **TA317237**

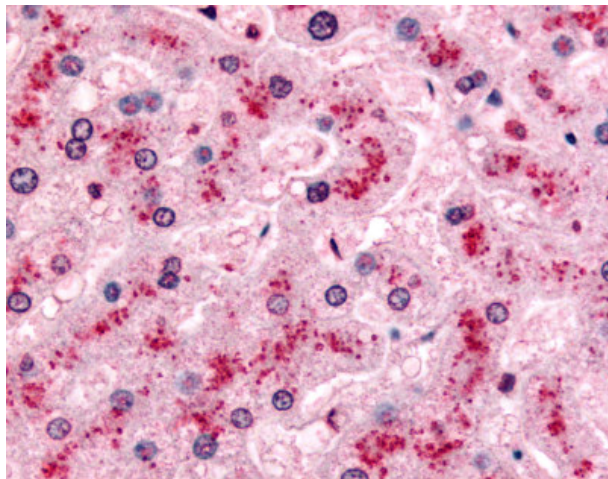
PYGL Rabbit Polyclonal Antibody

Product data:

Product Type:	Primary Antibodies
Applications:	IHC
Recommended Dilution:	IHC-P (10 µg/ml)
Reactivity:	Dog, Gorilla, Human (Predicted: Monkey)
Host:	Rabbit
Isotype:	IgG
Clonality:	Polyclonal
Immunogen:	PYGL antibody was raised against synthetic 10 amino acid peptide from internal region of human PYGL. Percent identity with other species by BLAST analysis: Human, Gorilla, Monkey, Dog (100%); Gibbon, Marmoset, Panda (90%); Mouse, Sheep, Hamster, Horse, Rabbit (80%).
Formulation:	PBS, 0.1% sodium azide.
Concentration:	lot specific
Purification:	Immunoaffinity Chromatography
Conjugation:	Unconjugated
Storage:	Store at -20°C as received.
Stability:	Stable for 12 months from date of receipt.
Gene Name:	phosphorylase, glycogen, liver
Database Link:	NP_002854 Entrez Gene 403738 Dog Entrez Gene 706853 Monkey Entrez Gene 5836 Human P06737
Synonyms:	GSD6
Note:	Specific for Human PYGL. BLAST analysis of the peptide immunogen showed no homology with other human proteins.
Protein Families:	Druggable Genome
Protein Pathways:	Insulin signaling pathway, Starch and sucrose metabolism



[View online »](#)

Product images:

Anti-PYGL antibody IHC of human liver.
Immunohistochemistry of formalin-fixed,
paraffin-embedded tissue after heat-induced
antigen retrieval.