

## Product datasheet for **TA317236**

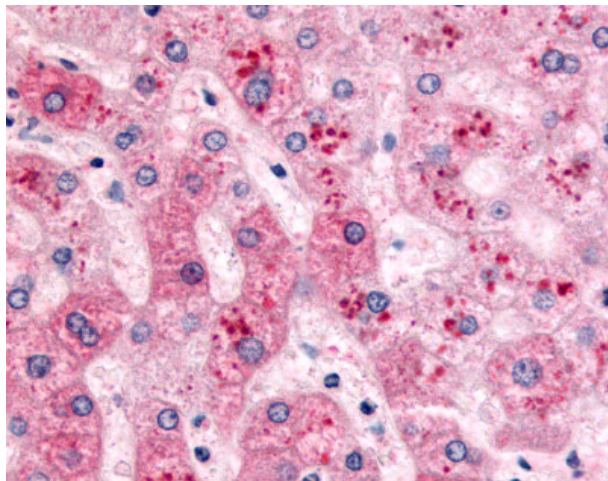
### PYGL Rabbit Polyclonal Antibody

#### Product data:

Product Type:	Primary Antibodies
Applications:	IHC
Recommended Dilution:	IHC-P (10 µg/ml)
Reactivity:	Gorilla, Human, Monkey, Gibbon
Host:	Rabbit
Isotype:	IgG
Clonality:	Polyclonal
Immunogen:	PYGL antibody was raised against synthetic 17 amino acid peptide from C-terminus of human PYGL. Percent identity with other species by BLAST analysis: Human, Gorilla, Gibbon, Monkey, Marmoset (100%).
Formulation:	PBS, 0.1% sodium azide.
Concentration:	lot specific
Purification:	Immunoaffinity Chromatography
Conjugation:	Unconjugated
Storage:	Store at -20°C as received.
Stability:	Stable for 12 months from date of receipt.
Gene Name:	phosphorylase, glycogen, liver
Database Link:	<a href="#">NP_002854</a> <a href="#">Entrez Gene 706853 Monkey</a> <a href="#">Entrez Gene 5836 Human</a> <a href="#">P06737</a>
Synonyms:	GSD6
Note:	Specific for Human PYGL. BLAST analysis of the peptide immunogen showed no homology with other human proteins.
Protein Families:	Druggable Genome
Protein Pathways:	Insulin signaling pathway, Starch and sucrose metabolism



[View online »](#)

**Product images:**

Anti-PYGL antibody IHC of human liver.  
Immunohistochemistry of formalin-fixed,  
paraffin-embedded tissue after heat-induced  
antigen retrieval.