

Product datasheet for **TA317235**

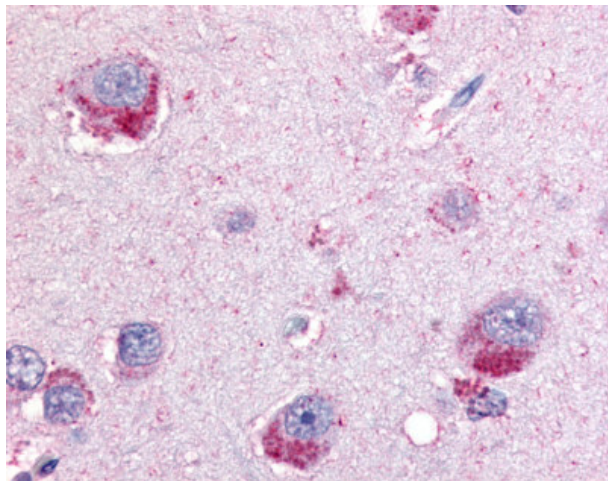
GPBB (PYGB) Rabbit Polyclonal Antibody

Product data:

Product Type:	Primary Antibodies
Applications:	IHC
Recommended Dilution:	IHC-P (10 µg/ml)
Reactivity:	Gorilla, Human, Monkey, Gibbon, Orang-Utan (Predicted: Mouse, Bat, Hamster)
Host:	Rabbit
Isotype:	IgG
Clonality:	Polyclonal
Immunogen:	GPBB / PYGB antibody was raised against synthetic 10 amino acid peptide from internal region of human PYGB. Percent identity with other species by BLAST analysis: Human, Gorilla, Orangutan, Gibbon, Monkey, Marmoset, Elephant (100%); Mouse, Bat, Hamster, Opossum, Platypus (90%); Rat, Dog, Panda, Horse, Rabbit, Lizard, Salmon, Pufferfish, Zebrafish (80%).
Formulation:	PBS, 0.1% sodium azide.
Concentration:	lot specific
Purification:	Immunoaffinity Chromatography
Conjugation:	Unconjugated
Storage:	Store at -20°C as received.
Stability:	Stable for 12 months from date of receipt.
Gene Name:	phosphorylase, glycogen; brain
Database Link:	NP_002853 Entrez Gene 110078 MouseEntrez Gene 705777 MonkeyEntrez Gene 5834 Human P11216
Synonyms:	GPBB
Note:	Specific for Human PYGB. BLAST analysis of the peptide immunogen showed no homology with other human proteins.
Protein Families:	Druggable Genome
Protein Pathways:	Insulin signaling pathway, Starch and sucrose metabolism



[View online »](#)

Product images:

Anti-PYGB antibody IHC of human brain. Immunohistochemistry of formalin-fixed, paraffin-embedded tissue after heat-induced antigen retrieval.