

## Product datasheet for **TA317234**

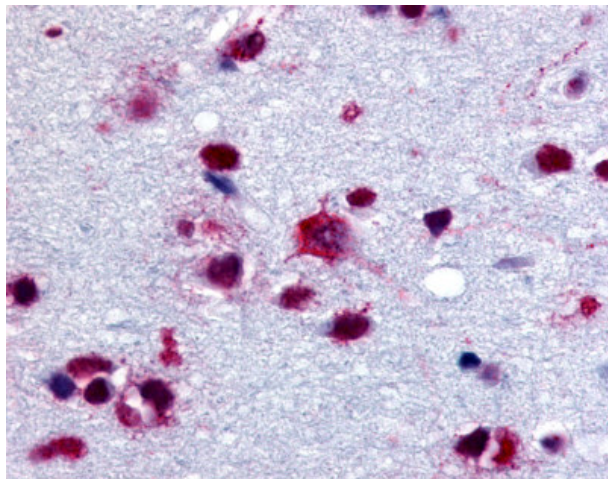
### GPBB (PYGB) Rabbit Polyclonal Antibody

#### Product data:

Product Type:	Primary Antibodies
Applications:	IHC
Recommended Dilution:	IHC-P (10 µg/ml)
Reactivity:	Gorilla, Human, Monkey, Rabbit, Gibbon (Predicted: Mouse, Rat, Dog, Hamster, Horse)
Host:	Rabbit
Isotype:	IgG
Clonality:	Polyclonal
Immunogen:	GPBB / PYGB antibody was raised against synthetic 12 amino acid peptide from C-terminus of human PYGB. Percent identity with other species by BLAST analysis: Human, Gorilla, Gibbon, Monkey, Marmoset, Rabbit (100%); Orangutan, Mouse, Rat, Dog, Hamster, Elephant, Panda, Horse (92%); Turkey, Chicken, Platypus, Xenopus (83%).
Formulation:	PBS, 0.1% sodium azide.
Concentration:	lot specific
Purification:	Immunoaffinity Chromatography
Conjugation:	Unconjugated
Storage:	Store at -20°C as received.
Stability:	Stable for 12 months from date of receipt.
Gene Name:	phosphorylase, glycogen; brain
Database Link:	<a href="#">NP_002853</a> <a href="#">Entrez Gene 25739 Rat</a> <a href="#">Entrez Gene 110078 Mouse</a> <a href="#">Entrez Gene 477003 Dog</a> <a href="#">Entrez Gene 705777 Monkey</a> <a href="#">Entrez Gene 5834 Human P11216</a>
Synonyms:	GPBB
Note:	Specific for Human PYGB. BLAST analysis of the peptide immunogen showed no homology with other human proteins.
Protein Families:	Druggable Genome
Protein Pathways:	Insulin signaling pathway, Starch and sucrose metabolism



[View online »](#)

**Product images:**

Anti-PYGB antibody IHC of human brain. Immunohistochemistry of formalin-fixed, paraffin-embedded tissue after heat-induced antigen retrieval.