

Product datasheet for **TA317227**

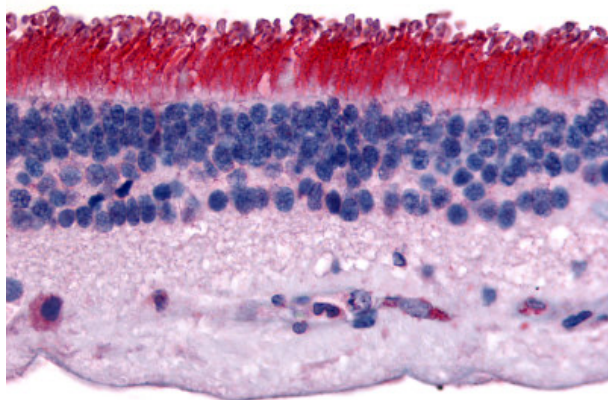
RPTP mu (PTPRM) Rabbit Polyclonal Antibody

Product data:

Product Type:	Primary Antibodies
Applications:	IHC
Recommended Dilution:	IHC-P (15 µg/ml)
Reactivity:	Human, Mouse, Rabbit, Rat, Gibbon, Hamster, Horse (Predicted: Monkey, Bat, Bovine)
Host:	Rabbit
Isotype:	IgG
Clonality:	Polyclonal
Immunogen:	PTPRM / PTP Mu antibody was raised against synthetic 18 amino acid peptide from internal region of human PTPRM. Percent identity with other species by BLAST analysis: Human, Gibbon, Monkey, Mouse, Rat, Hamster, Panda, Horse, Rabbit, Opossum (100%); Marmoset, Bovine, Bat (94%).
Formulation:	PBS, 0.1% sodium azide.
Concentration:	lot specific
Purification:	Immunoaffinity Chromatography
Conjugation:	Unconjugated
Storage:	Store at -20°C as received.
Stability:	Stable for 12 months from date of receipt.
Gene Name:	protein tyrosine phosphatase, receptor type M
Database Link:	NP_002836 Entrez Gene 19274 Mouse Entrez Gene 29616 Rat Entrez Gene 722426 Monkey Entrez Gene 5797 Human P28827
Synonyms:	hR-PTPu; PTPRL1; R-PTP-MU; RPTPM; RPTPU
Note:	Specific for Human PTPRM. BLAST analysis of the peptide immunogen showed no homology with other human proteins.
Protein Families:	Druggable Genome, Phosphatase, Transmembrane
Protein Pathways:	Adherens junction, Cell adhesion molecules (CAMs)



[View online »](#)

Product images:

Anti-PTPRM antibody IHC of human retina. Immunohistochemistry of formalin-fixed, paraffin-embedded tissue after heat-induced antigen retrieval.