

## Product datasheet for **TA317220**

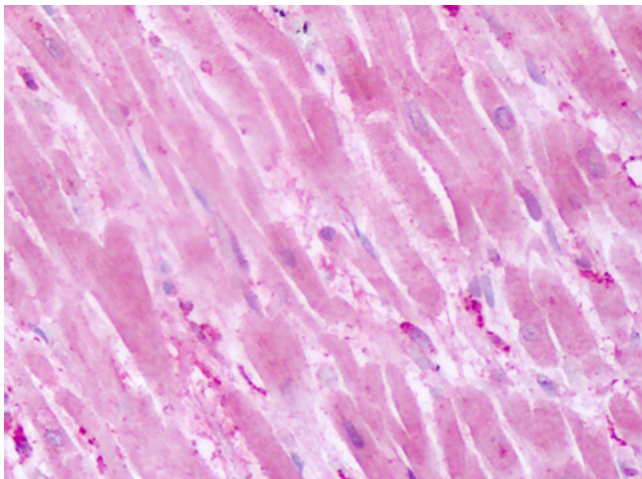
### PTP alpha (PTPRA) Rabbit Polyclonal Antibody

#### Product data:

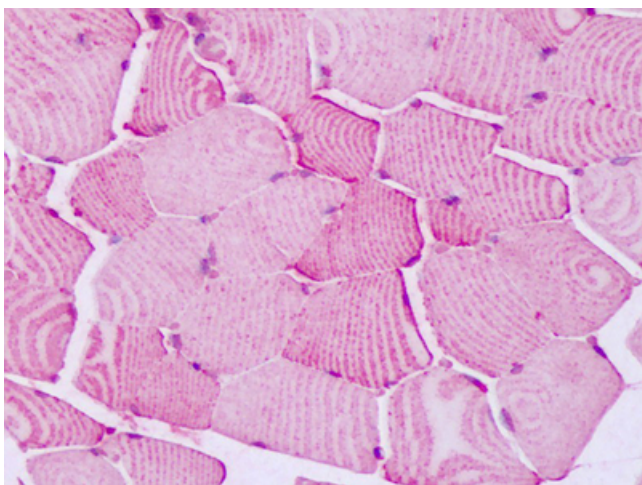
Product Type:	Primary Antibodies
Applications:	IHC
Recommended Dilution:	IHC-P (10 µg/ml)
Reactivity:	Bat, Bovine, Dog, Gorilla, Human, Monkey, Mouse, Pig, Rabbit, Gibbon, Hamster, Horse (Predicted: Rat)
Host:	Rabbit
Isotype:	IgG
Clonality:	Polyclonal
Immunogen:	PTPRA / RPTP-Alpha antibody was raised against synthetic 17 amino acid peptide from cytoplasmic domain of human PTPRA. Percent identity with other species by BLAST analysis: Human, Gorilla, Gibbon, Monkey, Marmoset, Mouse, Hamster, Panda, Bovine, Dog, Bat, Horse, Rabbit, Pig (100%); Rat (94%); Elephant, Turkey, Chicken (88%); Xenopus (82%).
Formulation:	PBS, 0.1% sodium azide.
Concentration:	lot specific
Purification:	Immunoaffinity Chromatography
Conjugation:	Unconjugated
Storage:	Store at -20°C as received.
Stability:	Stable for 12 months from date of receipt.
Gene Name:	protein tyrosine phosphatase, receptor type A
Database Link:	<a href="#">NP_002827</a> <a href="#">Entrez Gene 19262 MouseEntrez Gene 25167 RatEntrez Gene 477176 DogEntrez Gene 574364 MonkeyEntrez Gene 5786 Human P18433</a>
Synonyms:	HEPTP; HLPR; HPTPA; HPTPalpha; LRP; PTPA; PTPRL2; R-PTP-alpha; RPTPA
Note:	Specific for Human PTPRA. BLAST analysis of the peptide immunogen showed no homology with other human proteins.
Protein Families:	Druggable Genome, Phosphatase, Transmembrane



[View online »](#)

**Product images:**

Anti-PTPRA antibody IHC of human heart. Immunohistochemistry of formalin-fixed, paraffin-embedded tissue after heat-induced antigen retrieval. Antibody dilution 10 ug/ml.



Anti-PTPRA antibody IHC of human skeletal muscle. Immunohistochemistry of formalin-fixed, paraffin-embedded tissue after heat-induced antigen retrieval. Antibody dilution 10 ug/ml.