

Product datasheet for **TA317214**

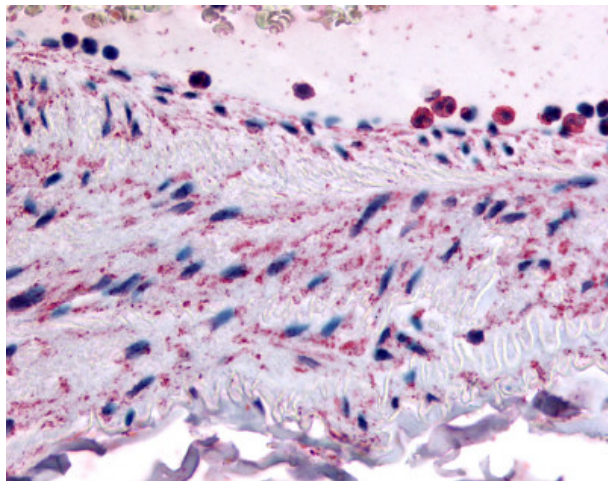
PTPMT1 Rabbit Polyclonal Antibody

Product data:

Product Type:	Primary Antibodies
Applications:	IHC
Recommended Dilution:	IHC-P (10 - 15 µg/ml)
Reactivity:	Dog, Gorilla, Human, Monkey, Gibbon
Host:	Rabbit
Isotype:	IgG
Clonality:	Polyclonal
Immunogen:	PTPMT1 antibody was raised against synthetic 16 amino acid peptide from N-terminus of human PTPMT1. Percent identity with other species by BLAST analysis: Human, Gorilla, Gibbon, Monkey, Dog, Panda (100%); Marmoset, Bovine, Pig (88%).
Formulation:	PBS, 0.1% sodium azide.
Concentration:	lot specific
Purification:	Immunoaffinity Chromatography
Conjugation:	Unconjugated
Storage:	Store at -20°C as received.
Stability:	Stable for 12 months from date of receipt.
Gene Name:	protein tyrosine phosphatase, mitochondrial 1
Database Link:	NP_783859 Entrez Gene 483622 Dog Entrez Gene 713104 Monkey Entrez Gene 114971 Human Q8WUK0
Synonyms:	DUSP23; MOSP; PLIP; PNAS-129
Note:	Specific for Human PTPMT1. BLAST analysis of the peptide immunogen showed no homology with other human proteins.
Protein Families:	Druggable Genome



[View online »](#)

Product images:

Anti-PTPMT1 antibody IHC of human vascular smooth muscle. Immunohistochemistry of formalin-fixed, paraffin-embedded tissue after heat-induced antigen retrieval.