

Product datasheet for **TA317209**

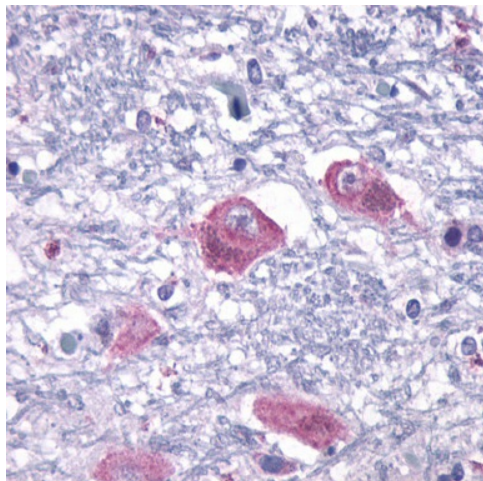
Parathyroid Hormone Receptor 2 (PTH2R) Rabbit Polyclonal Antibody

Product data:

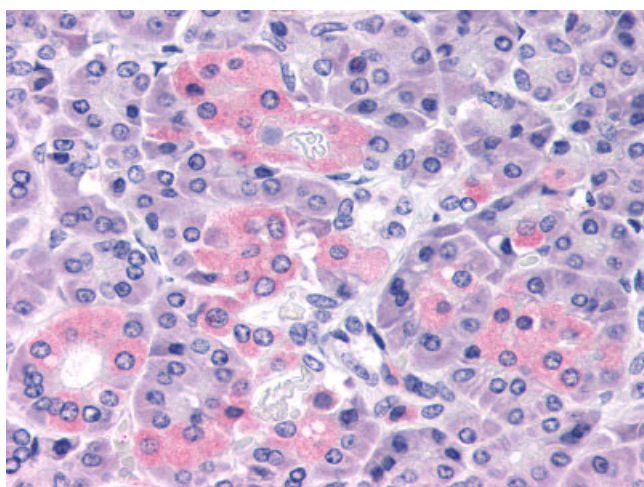
Product Type:	Primary Antibodies
Applications:	IHC
Recommended Dilution:	IHC-P (9 µg/ml)
Reactivity:	Human (Predicted: Monkey)
Host:	Rabbit
Isotype:	IgG
Clonality:	Polyclonal
Immunogen:	PTH2R / PTH2R antibody was raised against synthetic 20 amino acid peptide from 1st extracellular domain of human PTH2R / PTHR2. Percent identity with other species by BLAST analysis: Human (100%); Gorilla, Gibbon, Monkey (95%).
Formulation:	PBS, 0.1% sodium azide.
Concentration:	lot specific
Purification:	Immunoaffinity Chromatography
Conjugation:	Unconjugated
Storage:	Store at -20°C as received.
Stability:	Stable for 12 months from date of receipt.
Gene Name:	parathyroid hormone 2 receptor
Database Link:	NP_005039 Entrez Gene 710383 Monkey Entrez Gene 5746 Human P49190
Synonyms:	PTH2R
Note:	Specific for Human PTH2R / PTHR2. BLAST analysis of the peptide immunogen showed no homology with other human proteins.
Protein Families:	Druggable Genome, GPCR, Transmembrane
Protein Pathways:	Neuroactive ligand-receptor interaction



[View online »](#)

Product images:

Anti-PTH2R / PTHR2 antibody IHC of human brain, neurons and glia. Immunohistochemistry of formalin-fixed, paraffin-embedded tissue after heat-induced antigen retrieval.



Anti-PTH2R / PTHR2 antibody IHC of human pancreas. Immunohistochemistry of formalin-fixed, paraffin-embedded tissue after heat-induced antigen retrieval.