

Product datasheet for **TA317197**

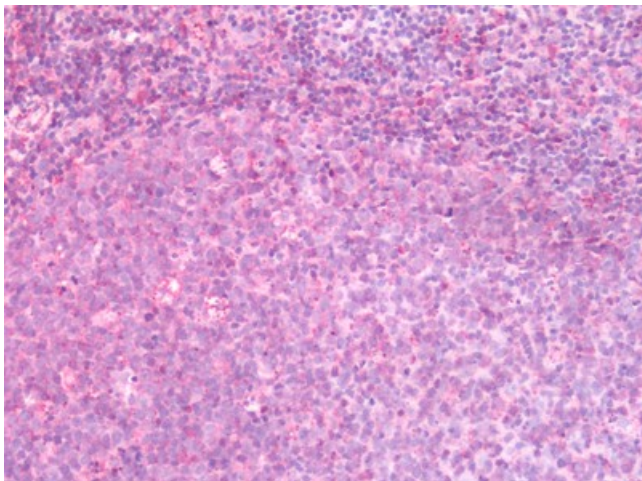
GPR44 (PTGDR2) Rabbit Polyclonal Antibody

Product data:

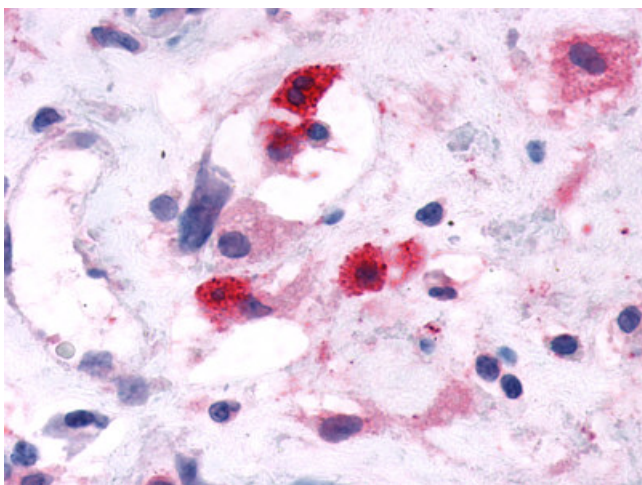
Product Type:	Primary Antibodies
Applications:	IHC
Recommended Dilution:	ICC, IHC-P (5 - 10 µg/ml)
Reactivity:	Gorilla, Human, Gibbon (Predicted: Monkey)
Host:	Rabbit
Isotype:	IgG
Clonality:	Polyclonal
Immunogen:	GPR44 / CRTH2 antibody was raised against synthetic 33 amino acid peptide from N-terminal extracellular domain of human GPR44 / CRTH2. Percent identity with other species by BLAST analysis: Human, Gorilla, Gibbon (100%); Monkey (91%); Dog, Pig (88%); Rabbit (85%); Bovine (82%).
Formulation:	PBS, 0.1% sodium azide.
Concentration:	lot specific
Purification:	Immunoaffinity Chromatography
Conjugation:	Unconjugated
Storage:	Store at -20°C as received.
Stability:	Stable for 12 months from date of receipt.
Gene Name:	prostaglandin D2 receptor 2
Database Link:	NP_004769 Entrez Gene 695853 Monkey Entrez Gene 11251 Human Q9Y5Y4
Synonyms:	CD294; CRTH2; DL1R; DP2; GPR44
Note:	Specific for Human GPR44 / CRTH2. BLAST analysis of the peptide immunogen showed no homology with other human proteins.
Protein Families:	Druggable Genome, GPCR, Transmembrane



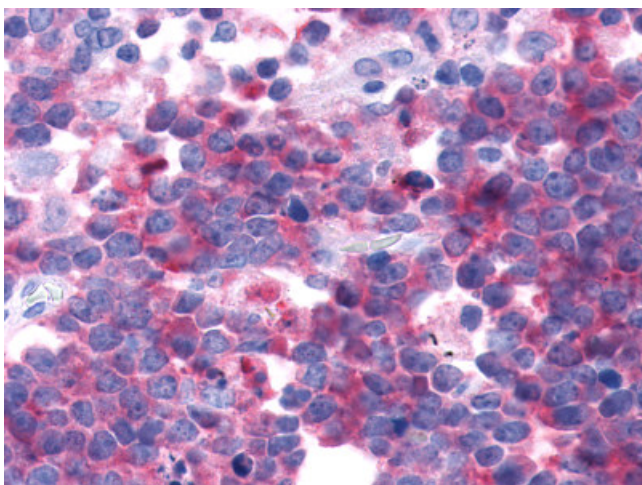
[View online »](#)

Product images:

Human Tonsil: Formalin-Fixed, Paraffin-Embedded (FFPE)



Anti-GPR44 / CRTH2 antibody IHC of human nasal mucosa, eosinophils. Immunohistochemistry of formalin-fixed, paraffin-embedded tissue after heat-induced antigen retrieval.



Anti-GPR44 / CRTH2 antibody IHC of human Lymph Node, Non-Hodgkins Lymphoma. Immunohistochemistry of formalin-fixed, paraffin-embedded tissue after heat-induced antigen retrieval.