

Product datasheet for **TA317170**

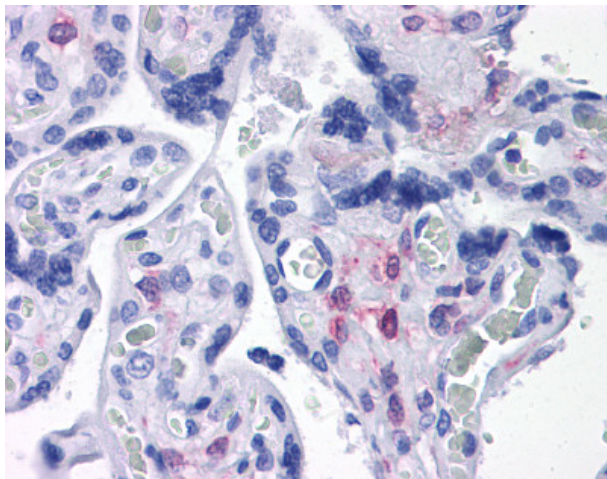
PLAC1 Rabbit Polyclonal Antibody

Product data:

Product Type:	Primary Antibodies
Applications:	IHC
Recommended Dilution:	ELISA, IHC-P (5 µg/ml), WB (1 µg/ml)
Reactivity:	Human
Host:	Rabbit
Isotype:	IgG
Clonality:	Polyclonal
Immunogen:	PLAC1 antibody was raised against a 15 amino acid peptide near the carboxy terminus of human PLAC1.
Formulation:	PBS, 0.02% sodium azide
Purification:	Immunoaffinity Chromatography
Conjugation:	Unconjugated
Storage:	Store at -20°C as received.
Stability:	Stable for 12 months from date of receipt.
Gene Name:	placenta specific 1
Database Link:	NP_068568 Entrez Gene 10761 Human Q9HBJ0
Synonyms:	CT92; OOSP2L
Note:	Specific for Human PLAC1
Protein Families:	Secreted Protein



[View online »](#)

Product images:

Anti-PLAC1 antibody IHC of human placenta. Immunohistochemistry of formalin-fixed, paraffin-embedded tissue after heat-induced antigen retrieval. Antibody concentration 5 ug/ml.