

Product datasheet for **TA317153**

PDE7B Rabbit Polyclonal Antibody

Product data:

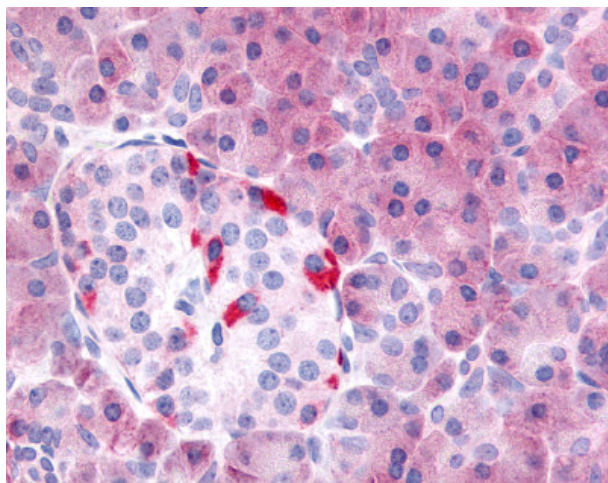
Product Type:	Primary Antibodies
Applications:	IHC
Recommended Dilution:	IHC-P (1.25 - 2.5 µg/ml)
Reactivity:	Gorilla, Human, Monkey, Gibbon (Predicted: Mouse, Rat, Bat, Bovine, Dog, Hamster, Horse, Pig, Rabbit, Chicken)
Host:	Rabbit
Isotype:	IgG
Clonality:	Polyclonal
Immunogen:	PDE7B antibody was raised against synthetic 18 amino acid peptide from internal region of human PDE7B. Percent identity with other species by BLAST analysis: Human, Gorilla, Gibbon, Monkey, Marmoset (100%); Mouse, Rat, Bovine, Dog, Bat, Hamster, Elephant, Panda, Horse, Rabbit, Pig, Turkey, Chicken (94%); Platypus (89%).
Formulation:	PBS, 0.1% sodium azide.
Concentration:	lot specific
Purification:	Immunoaffinity Chromatography
Conjugation:	Unconjugated
Storage:	Store at -20°C as received.
Stability:	Stable for 12 months from date of receipt.
Gene Name:	phosphodiesterase 7B
Database Link:	NP_061818 Entrez Gene 29863 MouseEntrez Gene 140929 RatEntrez Gene 483996 DogEntrez Gene 711783 MonkeyEntrez Gene 27115 Human Q9NP56
Synonyms:	bA472E5.1
Note:	Specific for Human PDE7B. BLAST analysis of the peptide immunogen showed no homology with other human proteins.
Protein Families:	Druggable Genome



[View online »](#)

Protein Pathways: Progesterone-mediated oocyte maturation, Purine metabolism

Product images:



Anti-PDE7B antibody IHC of human pancreas. Immunohistochemistry of formalin-fixed, paraffin-embedded tissue after heat-induced antigen retrieval.