

Product datasheet for **TA317152**

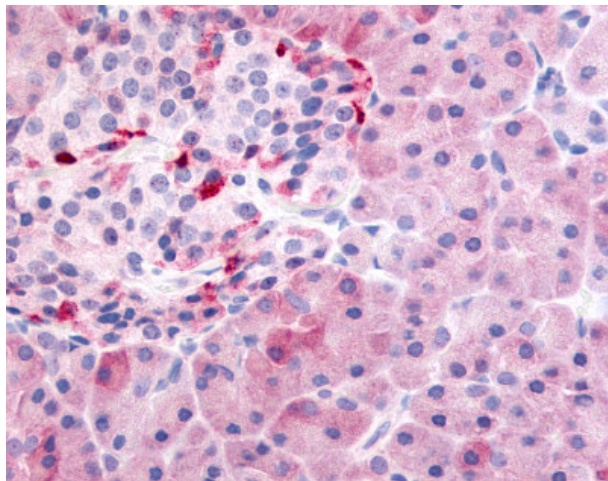
PDE7B Rabbit Polyclonal Antibody

Product data:

Product Type:	Primary Antibodies
Applications:	IHC
Recommended Dilution:	IHC-P (10 µg/ml)
Reactivity:	Human (Predicted: Monkey)
Host:	Rabbit
Isotype:	IgG
Clonality:	Polyclonal
Immunogen:	PDE7B antibody was raised against synthetic 17 amino acid peptide from near N-terminus of human PDE7B. Percent identity with other species by BLAST analysis: Human (100%); Gibbon, Monkey (94%); Gorilla, Mouse, Rat, Elephant, Horse, Rabbit (88%); Opossum (82%).
Formulation:	PBS, 0.1% sodium azide.
Purification:	Immunoaffinity Chromatography
Conjugation:	Unconjugated
Storage:	Store at -20°C as received.
Stability:	Stable for 12 months from date of receipt.
Gene Name:	phosphodiesterase 7B
Database Link:	NP_061818 Entrez Gene 711783 Monkey Entrez Gene 27115 Human Q9NP56
Synonyms:	bA472E5.1
Note:	Specific for Human PDE7B. BLAST analysis of the peptide immunogen showed no homology with other human proteins.
Protein Families:	Druggable Genome
Protein Pathways:	Progesterone-mediated oocyte maturation, Purine metabolism



[View online »](#)

Product images:

Anti-PDE7B antibody IHC of human pancreas. Immunohistochemistry of formalin-fixed, paraffin-embedded tissue after heat-induced antigen retrieval.