

Product datasheet for **TA317151**

PDE7A Rabbit Polyclonal Antibody

Product data:

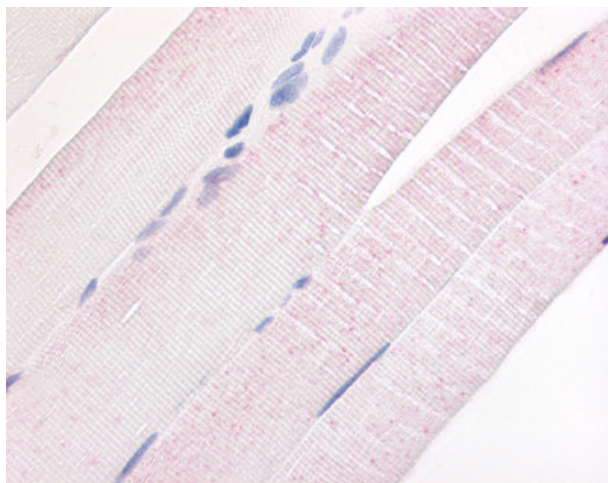
Product Type:	Primary Antibodies
Applications:	IHC
Recommended Dilution:	IHC-P (20 µg/ml)
Reactivity:	Bat, Bovine, Dog, Xenopus, Gorilla, Human, Monkey, Rabbit, Gibbon, Orang-Utan (Predicted: Mouse, Rat, Hamster)
Host:	Rabbit
Isotype:	IgG
Clonality:	Polyclonal
Immunogen:	PDE7A antibody was raised against synthetic 17 amino acid peptide from N-terminus of human PDE7A. Percent identity with other species by BLAST analysis: Human, Gorilla, Orangutan, Gibbon, Monkey, Marmoset, Bovine, Dog, Bat, Elephant, Panda, Rabbit, Opossum, Xenopus (100%); Mouse, Rat, Hamster, Turkey, Lizard (94%); Zebrafish (82%).
Formulation:	PBS, 0.1% sodium azide.
Concentration:	lot specific
Purification:	Immunoaffinity Chromatography
Conjugation:	Unconjugated
Storage:	Store at -20°C as received.
Stability:	Stable for 12 months from date of receipt.
Gene Name:	phosphodiesterase 7A
Database Link:	NP_002595 Entrez Gene 18583 MouseEntrez Gene 81744 RatEntrez Gene 486975 DogEntrez Gene 702193 MonkeyEntrez Gene 5150 Human Q13946
Synonyms:	HCP1; PDE7
Note:	Specific for Human PDE7A. BLAST analysis of the peptide immunogen showed no homology with other human proteins.
Protein Families:	Druggable Genome



[View online »](#)

Protein Pathways: Progesterone-mediated oocyte maturation, Purine metabolism

Product images:



Anti-PDE7A antibody IHC of human skeletal muscle. Immunohistochemistry of formalin-fixed, paraffin-embedded tissue after heat-induced antigen retrieval.