

Product datasheet for **TA317150**

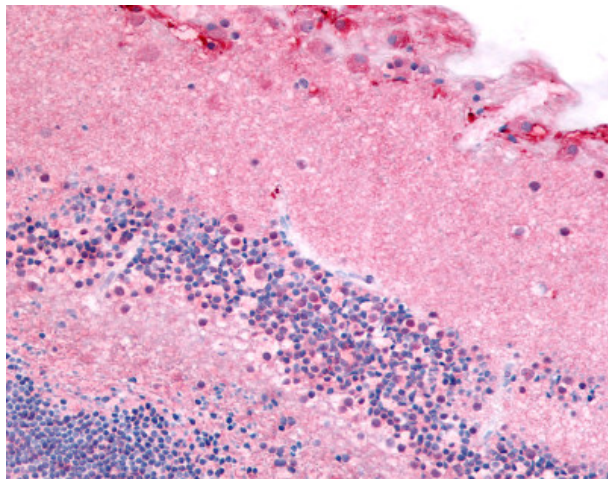
PDE6 alpha (PDE6A) Rabbit Polyclonal Antibody

Product data:

Product Type:	Primary Antibodies
Applications:	IHC
Recommended Dilution:	IHC-P (10 - 15 µg/ml)
Reactivity:	Gorilla, Human, Monkey, Mouse, Rat, Gibbon, Hamster (Predicted: Dog, Rabbit)
Host:	Rabbit
Isotype:	IgG
Clonality:	Polyclonal
Immunogen:	PDE6A antibody was raised against synthetic 18 amino acid peptide from N-terminus of human PDE6A / PDE6 Alpha. Percent identity with other species by BLAST analysis: Human, Gorilla, Gibbon, Monkey, Marmoset, Mouse, Rat, Hamster (100%); Dog, Panda, Rabbit (94%); Bovine, Bat, Elephant (89%); Horse, Opossum (83%).
Formulation:	PBS, 0.1% sodium azide.
Concentration:	lot specific
Purification:	Immunoaffinity Chromatography
Conjugation:	Unconjugated
Storage:	Store at -20°C as received.
Stability:	Stable for 12 months from date of receipt.
Gene Name:	phosphodiesterase 6A
Database Link:	NP_000431 Entrez Gene 225600 MouseEntrez Gene 307401 RatEntrez Gene 403620 DogEntrez Gene 677688 MonkeyEntrez Gene 5145 Human P16499
Synonyms:	CGPR-A; PDEA; RP43
Note:	Specific for Human PDE6A / PDE6 Alpha. BLAST analysis of the peptide immunogen showed no homology with other human proteins.
Protein Families:	Druggable Genome



[View online »](#)

Product images:

Anti-PDE6A / PDE6 Alpha antibody IHC of human eye, retina. Immunohistochemistry of formalin-fixed, paraffin-embedded tissue after heat-induced antigen retrieval.