

## Product datasheet for **TA317148**

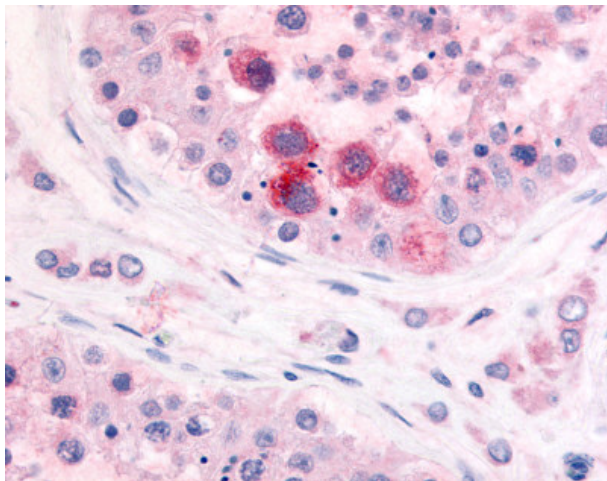
### PDE3A Rabbit Polyclonal Antibody

#### Product data:

Product Type:	Primary Antibodies
Applications:	IHC
Recommended Dilution:	IHC-P (20 µg/ml)
Reactivity:	Human (Predicted: Monkey)
Host:	Rabbit
Isotype:	IgG
Clonality:	Polyclonal
Immunogen:	PDE3A antibody was raised against synthetic 18 amino acid peptide from N-terminus of human PDE3A. Percent identity with other species by BLAST analysis: Human (100%); Gibbon, Monkey (94%); Horse (83%).
Formulation:	PBS, 0.1% sodium azide.
Concentration:	lot specific
Purification:	Immunoaffinity Chromatography
Conjugation:	Unconjugated
Storage:	Store at -20°C as received.
Stability:	Stable for 12 months from date of receipt.
Gene Name:	phosphodiesterase 3A
Database Link:	<a href="#">NP_000912</a> <a href="#">Entrez Gene 704524 Monkey</a> <a href="#">Entrez Gene 5139 Human</a> <a href="#">Q14432</a>
Synonyms:	CGI-PDE; CGI-PDE-A; CGI-PDE A
Note:	Specific for Human PDE3A. BLAST analysis of the peptide immunogen showed no homology with other human proteins.
Protein Families:	Druggable Genome, Transmembrane
Protein Pathways:	Insulin signaling pathway, Progesterone-mediated oocyte maturation, Purine metabolism



[View online »](#)

**Product images:**

Anti-PDE3A antibody IHC of human testis. Immunohistochemistry of formalin-fixed, paraffin-embedded tissue after heat-induced antigen retrieval.