

## Product datasheet for **TA317146**

### PDE1C Rabbit Polyclonal Antibody

#### Product data:

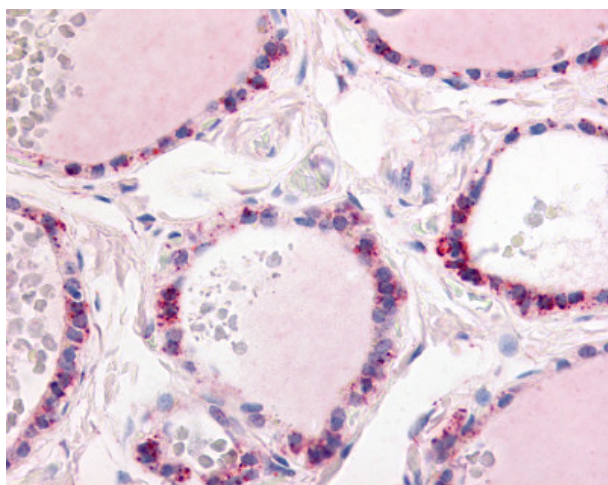
Product Type:	Primary Antibodies
Applications:	IHC
Recommended Dilution:	IHC-P (5 µg/ml)
Reactivity:	Bat, Bovine, Dog, Gorilla, Human, Monkey, Mouse, Rabbit, Rat, Gibbon, Hamster, Horse, Orang-Utan
Host:	Rabbit
Isotype:	IgG
Clonality:	Polyclonal
Immunogen:	PDE1C antibody was raised against synthetic 16 amino acid peptide from C-terminus of human PDE1C. Percent identity with other species by BLAST analysis: Human, Gorilla, Orangutan, Gibbon, Monkey, Marmoset, Mouse, Rat, Bovine, Dog, Bat, Hamster, Elephant, Panda, Horse, Rabbit (100%); Opossum (88%).
Formulation:	PBS, 0.1% sodium azide.
Concentration:	lot specific
Purification:	Immunoaffinity Chromatography
Conjugation:	Unconjugated
Storage:	Store at -20°C as received.
Stability:	Stable for 12 months from date of receipt.
Gene Name:	phosphodiesterase 1C
Database Link:	<a href="#">NP_005011</a> <a href="#">Entrez Gene 18575 Mouse</a> <a href="#">Entrez Gene 81742 Rat</a> <a href="#">Entrez Gene 475272 Dog</a> <a href="#">Entrez Gene 693937 Monkey</a> <a href="#">Entrez Gene 5137 Human</a> <a href="#">Q14123</a>
Synonyms:	cam-PDE 1C; hCam-3; Hcam3
Note:	Specific for Human PDE1C. BLAST analysis of the peptide immunogen showed no homology with other human proteins.
Protein Families:	Druggable Genome



[View online »](#)

**Protein Pathways:** Calcium signaling pathway, Olfactory transduction, Progesterone-mediated oocyte maturation, Purine metabolism

**Product images:**



Anti-PDE1C antibody IHC of human thyroid. Immunohistochemistry of formalin-fixed, paraffin-embedded tissue after heat-induced antigen retrieval.