

Product datasheet for **TA317128**

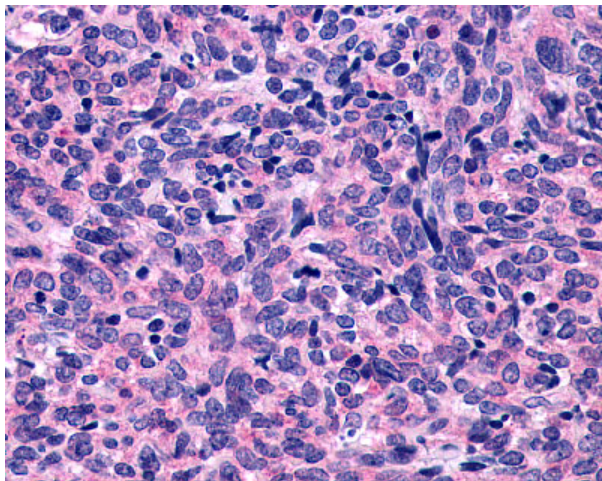
P2Y10 (P2RY10) Rabbit Polyclonal Antibody

Product data:

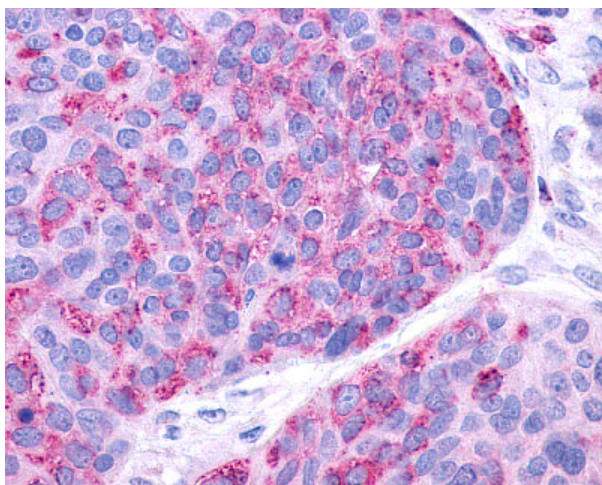
Product Type:	Primary Antibodies
Applications:	IHC
Recommended Dilution:	IHC-P (3 µg/ml)
Reactivity:	Gorilla, Human, Monkey
Host:	Rabbit
Isotype:	IgG
Clonality:	Polyclonal
Immunogen:	P2Y10 / P2RY10 antibody was raised against synthetic 16 amino acid peptide from 2nd extracellular domain of human P2RY10 / P2Y10. Percent identity with other species by BLAST analysis: Human, Gorilla, Monkey (100%); Gibbon (94%).
Formulation:	PBS, 0.1% sodium azide.
Concentration:	lot specific
Purification:	Immunoaffinity Chromatography
Conjugation:	Unconjugated
Storage:	Store at -20°C as received.
Stability:	Stable for 12 months from date of receipt.
Gene Name:	purinergic receptor P2Y10
Database Link:	NP_055314 Entrez Gene 707388 Monkey Entrez Gene 27334 Human O00398
Synonyms:	LYPSR2; P2Y10
Note:	Specific for Human P2RY10 / P2Y10. BLAST analysis of the peptide immunogen showed no homology with other human proteins.
Protein Families:	Druggable Genome, GPCR, Transmembrane
Protein Pathways:	Neuroactive ligand-receptor interaction



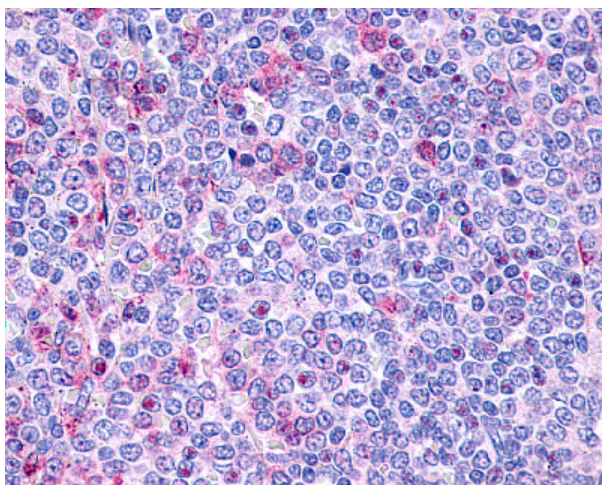
[View online »](#)

Product images:

Anti-P2Y10 / P2RY10 antibody IHC of human Lung, Small Cell Carcinoma. Immunohistochemistry of formalin-fixed, paraffin-embedded tissue after heat-induced antigen retrieval.



Anti-P2Y10 / P2RY10 antibody IHC of human Ovary, Carcinoma. Immunohistochemistry of formalin-fixed, paraffin-embedded tissue after heat-induced antigen retrieval.



Anti-P2RY10 / P2Y10 antibody IHC of human spleen, lymphocytes. Immunohistochemistry of formalin-fixed, paraffin-embedded tissue after heat-induced antigen retrieval.