

Product datasheet for **TA317127**

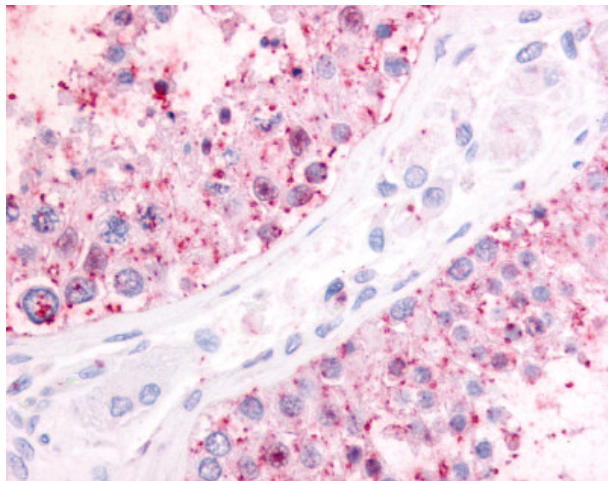
P2Y1 (P2RY1) Rabbit Polyclonal Antibody

Product data:

Product Type:	Primary Antibodies
Applications:	IHC
Recommended Dilution:	IHC-P (20 µg/ml)
Reactivity:	Gorilla, Human (Predicted: Monkey, Mouse)
Host:	Rabbit
Isotype:	IgG
Clonality:	Polyclonal
Immunogen:	P2RY1 / P2Y1 antibody was raised against synthetic 18 amino acid peptide from N-terminal extracellular domain of human P2RY1 / P2Y1. Percent identity with other species by BLAST analysis: Human, Gorilla (100%); Gibbon, Monkey, Mouse (94%); Marmoset, Rat, Hamster, Bovine (89%); Rabbit, Pig (83%).
Formulation:	PBS, 0.1% sodium azide.
Concentration:	lot specific
Purification:	Immunoaffinity Chromatography
Conjugation:	Unconjugated
Storage:	Store at -20°C as received.
Stability:	Stable for 12 months from date of receipt.
Gene Name:	purinergic receptor P2Y1
Database Link:	NP_002554 Entrez Gene 18441 Mouse Entrez Gene 708507 Monkey Entrez Gene 5028 Human P47900
Synonyms:	P2Y1
Note:	Specific for Human P2RY1 / P2Y1. BLAST analysis of the peptide immunogen showed no homology with other human proteins.
Protein Families:	Druggable Genome, GPCR, Transmembrane
Protein Pathways:	Neuroactive ligand-receptor interaction



[View online »](#)

Product images:

Anti-P2RY1 / P2Y1 antibody IHC of human testis. Immunohistochemistry of formalin-fixed, paraffin-embedded tissue after heat-induced antigen retrieval.