

## Product datasheet for **TA317118**

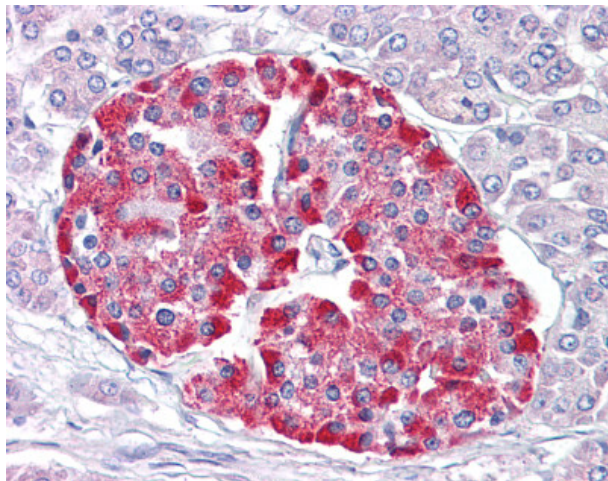
### OSTF1 Mouse Monoclonal Antibody [Clone ID: AT2F11]

#### Product data:

Product Type:	Primary Antibodies
Clone Name:	AT2F11
Applications:	IHC
Recommended Dilution:	ELISA, IHC-P (10 µg/ml), WB (1:1000)
Reactivity:	Human, Mouse
Host:	Mouse
Isotype:	IgG1, kappa
Clonality:	Monoclonal
Immunogen:	OSTF1 / OSF antibody was raised against recombinant protein
Formulation:	PBS, pH 7.4, 0.1% sodium azide. Sourced in Ascites.
Concentration:	lot specific
Purification:	Protein G Column
Conjugation:	Unconjugated
Storage:	Store at -20°C as received.
Stability:	Stable for 12 months from date of receipt.
Gene Name:	osteoclast stimulating factor 1
Database Link:	<a href="#">NP_036515</a> <a href="#">Entrez Gene 20409 Mouse</a> <a href="#">Entrez Gene 26578 Human</a> <a href="#">Q92882</a>
Synonyms:	bA235O14.1; OSF; SH3P2
Note:	Specific for Human OSTF1



[View online »](#)

**Product images:**

Anti-OSTF1 antibody IHC of human pancreas. Immunohistochemistry of formalin-fixed, paraffin-embedded tissue after heat-induced antigen retrieval. Antibody concentration 10 ug/ml.